



# Gas Production & Depletion And Coal Production

December 2018



## Gas Reserve & Production at a glance

Gas Initially in Place (GIIP)	:	35,796.19 Bcf
Recoverable (2P)	:	28,685.40 Bcf
Cumulative Production as of December 2018	:	<b>16,459.09</b> Bcf
Remaining Reserve up to December 2018	:	12,226.31 Bcf
Gas Production in December 2018	:	80.66 Bcf
National Oil Company (NOC's) production in December 2018	:	32.98 Bcf
International Oil Company (IOC's) production in December 2018	:	47.70 Bcf
No. of National Oil Company (NOC's) in December 2018	:	3 (BGFCL, BAPEX, SGFL)
No. of International Oil Company (IOC's) in December 2018	:	2 (Chevron, Tullow)
Total gas fields of National Oil Company(NOC) in December 2018	:	21
Total gas fields of International Oil Company(IOC) in December 2018	:	5
Total gas wells of National Oil Company(NOC) in December 2018	:	116
Total gas wells of International Oil Company(IOC) in December 2018	:	60
No. of National Oil Company (NOC's) gas production well in December 2018	:	66
No. of International Oil Company (IOC's) gas production well in December 2018	:	44
No. of National Oil company(NOC's) suspended well in December 2018	:	50
No. of International Oil company(IOC's) suspended well in December 2018	:	16

## Executive Summary of December 2018

Total gas and condensate Production in December 2018 were 80.66 Bcf and 345,061 Bbl. In the previous month i.e. November 2018, gas and condensate production was 81.41 Bcf and 347,837 Bbl and in the same month of the previous year i.e. December 2017, total gas and condensate production was 82.42 Bcf and 370,764 Bbl respectively. The National Oil Companies (NOC's) and International Oil Companies (IOC's) Produced 32.98 Bcf and 47.70 Bcf gas respectively in December 2018. During the previous month i.e. November 2018 gas production by the National Oil Companies (NOC's) and International Oil Companies (IOC's) were 32.45 Bcf and 48.96 Bcf respectively. In the month of December 2018 Bibiyana gas field Produced 37.29 Bcf gas and it ranked top among the gas producers. It is noted that Bibiyana gas field Produced 38.84 Bcf in November 2018. Average production from the field during the month of December 2018 was 1203 Mmcf/d.

During the month of December 2018 total production of condensate was 345,601 Bbl compared to 347,837 Bbl in the previous month i.e. November 2018. Bibiyana gas field Produced 264,265 Bbl condensate and ranked top while Jalalabad ranked 2<sup>nd</sup> by producing 29,676 Bbl.

The month of December 2018 total coal production was 92,352.74 Ton. In the previous month i.e. November 2018 total coal production was 75,498.51 Ton. It indicates that 16,854.23 Ton more Coal was produced compared to previous month.

## **Table of Contents**

<b>Gas Report</b>	<b>Page No.</b>
Summary	1
summary of Reserve and Production	2
Production comparison between November 2018 & December 2018	3
Probable Year wise Remaining GAS	4
Probable Year wise Remaining GAS	5
Production per well & production reserve ratio	6
Monthly Production by Fields & Wells up to December 2018	7-14
Monthly Condensate Production by Fields up to December 2018	15-16
Monthly Water Production by Fields from December 2018	17-18
Conditions of Field and Well up to December 2018	19-23
<b>Chart</b>	
Well-wise Production of All fields in 2017-18	24
Reserve, Production and Remaining Reserve as of December 2018	25
Daily Average Gas Production from January 2012 to December 2018	26
Field wise Daily Average Production as of December 2018	27
Well wise Daily Average Production-BGFCL as of December 2018	28
Well wise Daily Average Production-BAPEX and SGFL, December 2018	29
Well wise Daily Average Production-IOC and JVA, December 2018	30
Comparison of Field wise Daily Average Gas Production between Nov 18 & Dec 18	31
Daily Average Production by Operator, December 2018	32
Comparison of Operator wise daily average Production between November 18 & December 18	33
Daily Average Production – National vs IOC’s, December 2018	34
Comparison of daily avg Gas Production- National vs IOC’s between November 18 & December 18	35
Daily Average Production IOC’s and JVA, December 2018	36
Monthly Condensate Production, December 2018	37
<b>Coal Report</b>	
Summary	38-39
Barapukuria Coal Mine-MPM and P Contract (BCMCL)	40
Barapukuria Coal Mine Day wise Data Graph for December 2018	41

## Summary of Reserve and Production As of 31 December 2018

<b>Gas Initially Place (Proven + Probable)</b>	<b>35,796.19 Bcf</b>	<b>35.80 Tcf</b>
<b>Recoverable (Proven + Probable)</b>	<b>28,685.40 Bcf</b>	<b>28.69 Tcf</b>
<b>Gas Production in December 2018</b>	<b>80.66 Bcf</b>	<b>0.08 Tcf</b>
<b>Cumulative Production as of December 2018</b>	<b>16459.09 Bcf</b>	<b>16.46 Tcf</b>
<b>Remaining Reserve</b>	<b>12,226.31 Bcf</b>	<b>12.23 Tcf</b>

*NOTE: Reserve figure based on "Updated Report on Bangladesh Gas Reserve Estimation 2010", prepared by Gustavson Associates LLC, USA*

# Summary of Reserve and Production

(As of December 2018)



SI No.	Field	2P	GIIP	2P Reserve	Gas Prod. In December '18	Cum. Gas Production	Remaining Reserve	Cum. Condensate Production	
1	Begumganj		47.0	33.0	0.2	1.5	31.5	Gas Bcf	0
2	Shahbazpur		415.0	261.0	1.5	57.8	203.2		6
3	Semutang		654.0	318.0	0.0	13.0	305.0		5
4	Fenchuganj		483.0	329.0	0.3	158.1	170.9		115
5	Salda Nadi		393.0	275.0	0.1	91.1	183.9		58
6	Srikail*		230.0	161.0	1.1	81.2	79.8		128
7	Sundalpur *		62.2	50.2	0.2	12.0	38.2		0
8	Rupganj		48.0	33.6	0.0	0.7	32.9		1
<b>Bapex</b>			<b>2,332.2</b>	<b>1,460.8</b>	<b>3.5</b>	<b>415.3</b>	<b>1,045.5</b>		<b>314</b>
9	Meghna		122.0	101.0	0.4	69.0	32.0		107
10	Narshingdi		405.0	345.0	0.8	200.0	145.0		418
11	Kamta		72.0	50.0	0.0	21.1	28.9		4
12	Habiganj		3,981.0	2,787.0	6.9	2,428.7	358.3		130
13	Bakhrabad		1,825.0	1,387.0	0.9	812.1	574.9		1,020
14	Titas		9,039.0	7,582.0	15.7	4,651.8	2,930.2		5,224
<b>BGFCL</b>			<b>15,444.0</b>	<b>12,252.0</b>	<b>24.7</b>	<b>8,182.7</b>	<b>4,069.3</b>		<b>6,903</b>
15	Sangu		976.0	771.0	0.0	489.5	281.5		37
<b>Santos/Cairn</b>			<b>976.0</b>	<b>771.0</b>	<b>0.0</b>	<b>489.5</b>	<b>281.5</b>		<b>37</b>
16	Bibiyana		5,321.0	4,532.0	37.3	3,593.8	938.2		21,154
17	Moulavi Bazar		630.0	494.0	0.7	322.3	171.7		117
18	Jalalabad**		1,346.0	1,346.0	7.4	1,277.5	68.5		10,139
<b>Chevron</b>			<b>7,297.0</b>	<b>6,372.0</b>	<b>45.4</b>	<b>5,193.7</b>	<b>1,178.3</b>		<b>31,410</b>
19	Feni		185.0	130.0	0.0	63.0	67.0		110
<b>Niko</b>			<b>185.0</b>	<b>129.6</b>		<b>63.0</b>	<b>66.6</b>		<b>110</b>
20	Kailas Tila		3,463.0	2,880.0	2.1	726.7	2,153.3		7,795
21	Sylhet		580.0	408.0	0.1	214.3	193.7		796
22	Rashidpur		3,887.0	3,134.0	1.6	627.6	2,506.4		776
23	Chattak		677.0	474.0	0.0	25.8	448.2		4
24	Beani Bazar		225.0	137.0	0.3	95.2	41.8		1,567
<b>SGFL</b>			<b>8,832.0</b>	<b>7,033.0</b>	<b>4.1</b>	<b>1,689.7</b>	<b>5,343.3</b>		<b>10,937</b>
25	Bangura		730.0	621.0	3.0	425.2	195.8		1,065
<b>Tullow</b>			<b>730.0</b>	<b>621.0</b>	<b>3.0</b>	<b>425.2</b>	<b>195.8</b>		<b>1,065</b>
26	Kutubdia		65.0	46.0	0.0	0.0	46.0		0
<b>Total</b>			<b>35,796.2</b>	<b>28,685.4</b>	<b>80.66</b>	<b>16,459.1</b>	<b>12,226.3</b>		<b>50,777</b>

\* Preliminary reserve estimated by BAPEX

\*\* 2P reserve estimation by Petrobangla has crossed the limit. So 2P reserve is estimated as GIIP reserve now.

## Production comparison between November 2018 & December

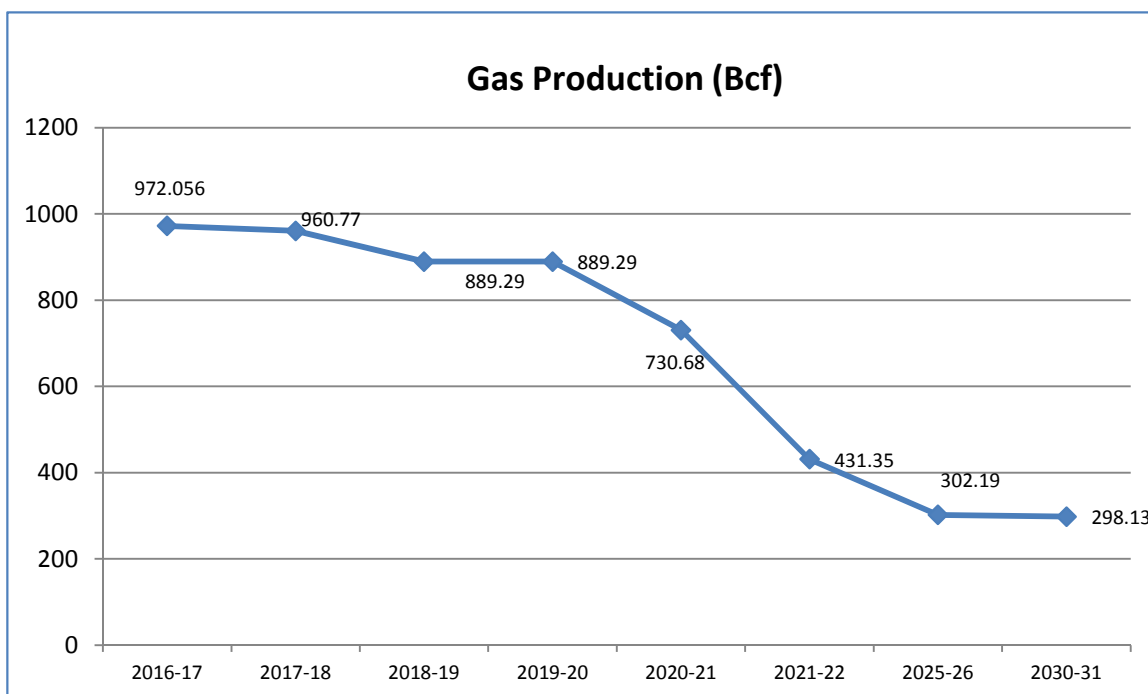


**HYDROCARBON UNIT**  
Energy & Mineral Resources Division

SI No.	Field	Gas Prod. (MMcf) in November'18	Daily Avg. (MMcfd) in November'18	Gas Prod. (MMcf) in December '18	Daily Avg. (MMcfd) in December'18
1	Begumganj	179	6	174	6
2	Shahbazpur	1525	51	1536	50
3	Semutang	21	1	20	1
4	Fenchuganj	340	11	342	11
5	Salda Nadi	126	4	133	4
6	Srikail	941	31	1076	35
7	Sundalpur	202	7	206	7
8	Rupganj	0	0	0	0
<b>Bapex</b>		<b>3333</b>	<b>111</b>	<b>3487</b>	<b>112</b>
9	Meghna	366	12	373	12
10	Narshingdi	820	27	821	26
11	Kamta	0	0	0	0
12	Habiganj	6886	230	6927	223
13	Bakhrabad	836	28	852	27
14	Titas	15509	517	15700	506
<b>BGFCL</b>		<b>24417</b>	<b>814</b>	<b>24672</b>	<b>796</b>
15	Sangu	0	0	0	0
<b>Santos/Cairn</b>		<b>0</b>	<b>0</b>	<b>0</b>	<b>0</b>
16	Bibiyana	38844	1295	37285	1203
17	Moulavi Bazar	725	24	718	23
18	Jalalabad	7341	245	7382	238
<b>Chevron</b>		<b>46909</b>	<b>1564</b>	<b>45385</b>	<b>1464</b>
19	Feni	0	0	0	0
<b>Niko</b>		<b>0</b>	<b>0</b>	<b>0</b>	<b>0</b>
20	Kailas Tila	2031	68	2081	67
21	Sylhet	132	4	137	4
22	Rashidpur	1543	51	1586	51
23	Chattak	0	0	0	0
24	Beani Bazar	266	9	277	9
<b>SGFL</b>		<b>3971</b>	<b>132</b>	<b>4081</b>	<b>132</b>
25	Bangura	2777	93	3037	98
<b>Tullow</b>		<b>2777</b>	<b>93</b>	<b>3037</b>	<b>98</b>
26	Kutubdia	0	0	0	0
		<b>0</b>	<b>0</b>	<b>0</b>	<b>0</b>
<b>Total</b>		<b>81408</b>	<b>2714</b>	<b>80662</b>	<b>2602</b>

## Probable Yearwise Remaining GAS

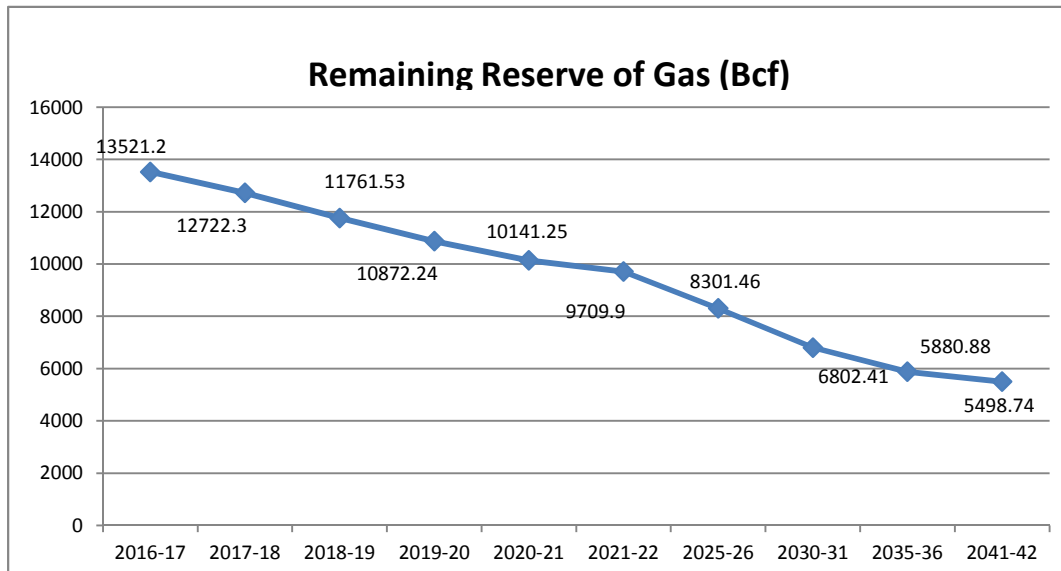
	Total 2P Reserve	Cumulative Production	production									
			2016-17	2017-18	2018-19	2019-20	2020-21	2021-22	2025-26	2030-31	2035-36	2041-42
Titas	7582	4556.6	191.13	195.42	195.42	195.42	195.42	195.42	195.42	195.42	0	0
Habiganj	2787	2386.8	81.17	79.9	79.9	79.9	79.9	79.9				
kamta	50	21.1	0	0		0	0	0	0	0	0	0
Bakhrabad	1387	806.9	14.26	12.02	12.02	12.02	12.02	12.02	12.02	12.02	12.02	12.02
Narshingdi	345	195	10.32	10.02	10.02	10.02	10.02	10.02	10.02	10.02		
Meghna	101	66.7	4.43	4.62	4.62	4.62	4.62	4.62	1.96			
Feni	130	63	0	0	0	0	0	0	0	0	0	0
Kailas Tila	2880	715	23.72	22.96	22.96	22.96	22.96	22.96	22.96	22.96	22.96	22.96
Sylhet	408	213.5	2.8	1.79	1.79	1.79	1.79	1.79	1.79	1.79	1.79	1.79
Rashidpur	3134	618.1	20.61	19.51	19.51	19.51	19.51	19.51	19.51	19.51	19.51	19.51
Chattak	474	25.8	0	0	0							
Beani Bazar	137	93.6	4.19	3.5	3.5	3.5	3.5	3.5	3.5	1.4		
Shahbazzpur	261	47.5	9.78	15.26	15.26	15.26	15.26	15.26	15.26	15.26		
Semutang	318	12.9	0.78	0.46	0.46	0.46	0.46	0.46	0.46	0.46	0.46	0.46
Fenchuganj	329	156.1	8.77	4.7	4.7	4.7	4.7	4.7	4.7	4.7	4.7	4.7
Saldanadi	275	90.3	1.89	1.06	1.06	1.06	1.06	1.06	1.06	1.06	1.06	1.06
Sundalpur	50.2	10.7	0	0.94	0.94	0.94	0.94	0.94	0.94	0.94	0.94	0.94
Srikail	161	75.1	14.99	12.93	12.93	12.93	12.93	12.93	0			
Jalalabad	1346	1233.3	96.81	92.09	20.61	20.61						
Moulavi Baz	494	317.3	13.71	12.34	12.34	12.34	12.34	12.34	12.34	12.34		
Bibiyana	4532	3357.7	437.17	437.33	437.33	437.33	299.33					
Bangura	621	409.4	35.09	33.67	33.67	33.67	33.67	33.67				
Sangu	771	489.5	0	0	0	0	0	0				
Begumganj	33	0.9	0.006	0	0	0	0	0				
Rupganj	33.6	0.7	0.43	0.25	0.25	0.25	0.25	0.25	0.25	0.25	0.25	0.25
Kutubdia	46	0	0	0	0							
	28685.8	15963.5	972.056	960.77	889.29	889.29	730.68	431.35	302.19	298.13	63.69	63.69





## Probable Year wise Remaining GAS

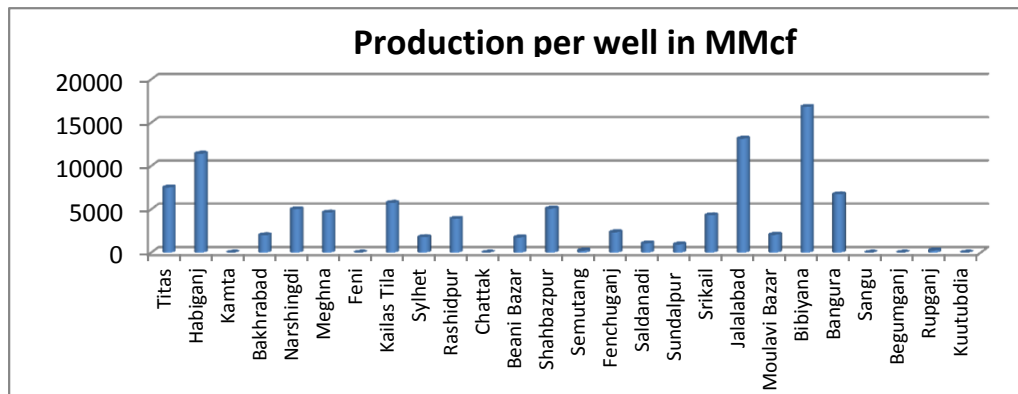
	Total 2p Reserve	Cumulative production	Remaining									
			2016-17	2017-18	2018-19	2019-20	2020-21	2021-22	2025-26	2030-31	2035-36	2041-42
Titas	7582	4556.6	3220.8	3025.4	2829.98	2634.56	2439.14	2243.72	1462.04	484.94	0	0
Habiganj	2787	2386.8	480.1	400.2	320.3	240.4	160.5	80.6			0	0
kamta	50	21.1	28.9	28.9	28.9	28.9	28.9	28.9	28.9	28.9	28.9	28.9
Bakhrabad	1387	806.9	592.1	580.1	568.08	556.06	544.04	532.02	483.94	423.84	363.74	291.62
Narshingdi	345	195	160	150	139.98	129.96	119.94	109.92	69.84	19.74	0	0
Meghna	101	66.7	38.9	34.3	29.68	25.06	20.44	15.82	0	0	0	0
Feni	130	63	67	67	67	67	67	67	67	67	0	0
Kailas Tila	2880	715	2188	2165	2142.04	2119.08	2096.12	2073.16	1981.32	1866.52	1751.72	1613.96
Sylhet	408	213.5	196.3	194.5	192.71	190.92	189.13	187.34	180.18	171.23	162.28	151.54
Rashidpur	3134	618.1	2535.4	2515.9	2496.39	2476.88	2457.37	2437.86	2359.82	2262.27	2164.72	2047.66
Chattak	474	25.8	448.2	448.2	448.2	448.2	448.2	448.2	448.2	448.2	448.2	448.2
Beani Bazar	137	93.6	46.9	43.4	39.9	36.4	32.9	29.4	15.4	0	0	0
Shahbazpur	261	47.5	228.8	213.5	198.24	182.98	167.72	152.46	91.42	15.12	0	0
Semutang	318	12.9	305.6	305.1	304.64	304.18	303.72	303.26	301.42	299.12	296.82	294.06
Fenchuganj	329	156.1	177.6	172.9	168.2	163.5	158.8	154.1	135.3	111.8	88.3	60.1
Saldanadi	275	90.3	185.7	184.7	183.64	182.58	181.52	180.46	176.22	170.92	165.62	159.26
Sundalpur	50.2	10.7	40.4	39.5	38.56	37.62	36.68	35.74	31.98	27.28	22.58	16.94
Srikail	161	75.1	98.9	85.9	72.97	60.04	47.11	34.18	0	0	0	0
Jalalabad	1346	1233.3	42.8	112.7	20.61	0	0	0	0	0	0	0
Moulavi Baz	494	317.3	189.1	176.7	164.36	152.02	139.68	127.34	77.98	16.28	0	0
Bibiyana	4532	3357.7	1611.7	1174.3	736.97	299.64	0	0	0	0	0	0
Bangura	621	409.4	245.2	211.6	177.93	144.26	110.59	76.92	0	0	0	0
Sangu	771	489.5	281.5	281.5	281.5	281.5	281.5	281.5	281.5	281.5	281.5	281.5
Begumganj	33	0.9	32.1	32.1	32.1	32.1	32.1	32.1	32.1	32.1	32.1	32.1
Rupganj	33.6	0.7	33.2	32.9	32.65	32.4	32.15	31.9	30.9	29.65	28.4	26.9
Kutubdia	46	0	46	46	46	46	46	46	46	46	46	46
<b>Total</b>	<b>28685.8</b>	<b>15963.5</b>	<b>13521.2</b>	<b>12722.3</b>	<b>11761.5</b>	<b>10872.2</b>	<b>10141.3</b>	<b>9709.9</b>	<b>8301.46</b>	<b>6802.41</b>	<b>5880.88</b>	<b>5498.74</b>



## Production per well & production reserve ratio



	No of well	Total 2p- Recoverable	2017-18 production	production per well mmcf	production reserve ratio
Titas	26	7582	195.42	7516.15	0.026
Habiganj	7	2787	79.9	11414.29	0.029
Kamta	0	50	0	0.00	0.000
Bakhrabad	6	1387	12.02	2003.33	0.009
Narshingdi	2	345	10.02	5010.00	0.029
Meghna	1	101	4.62	4620.00	0.046
Feni	0	130	0	0.00	0.000
Kailas Tila	4	2880	22.96	5740.00	0.008
Sylhet	1	408	1.79	1790.00	0.004
Rashidpur	5	3134	19.51	3902.00	0.006
Chattak	0	474	0	0.00	0.000
Beani Bazar	2	137	3.5	1750.00	0.026
Shahbazpur	3	261	15.26	5086.67	0.058
Semutang	2	318	0.46	230.00	0.001
Fenchuganj	2	329	4.7	2350.00	0.014
Saldanadi	1	275	1.06	1060.00	0.004
Sundalpur	1	50.2	0.94	940.00	0.019
Srikail	3	161	12.93	4310.00	0.080
Jalalabad	7	1346	92.09	13155.71	0.068
Moulavi Bazar	6	494	12.34	2056.67	0.025
Bibiyana	26	4532	437.33	16820.38	0.096
Bangura	5	621	33.67	6734.00	0.054
Sangu	0	771	0	0.00	0.000
Begumganj	0	33	0	0.00	0.000
Rupganj	1	33.6	0.25	250.00	0.007
Kuutubdia	0	46	0	0.00	0.000
<b>Total</b>	<b>111</b>	<b>28685.8</b>	<b>960.77</b>	<b>8655.59</b>	<b>0.033</b>



## Monthly Production by Field and Well upto December- 2018



**HYDROCARBON UNIT**  
Energy & Mineral Resources Division

Figures in mmscf

Well	Jan	Feb	Mar	Apr	May	Jun	Jul	Aug	Sep	Oct	Nov	Dec	Total	Cumulative	2017	2016	2015
<b>Field : Bakharabad</b>																	
BKB-1	0	0	0	0	0	0	0	0	0	0	0	0	0	141,167	0	0	1,030
BKB-2	44.35	39	41	38	38	37	38	37	35	33	31	34	445	86,571	543	731	873
BKB-3	202.35	184	182	158	160	161	165	162	152	157	152	154	1,989	160,845	2,249	2,223	1,620
BKB-4	0	0	0	0	0	0	0	0	0	0	0	0	0	55,872			
BKB-5	155.66	141	152	149	155	149	154	155	150	155	150	155	1,822	58,811	1,847	1,814	1,821
BKB-6	0	0	0	0	0	0	0	0	0	0	0	0	0	50,069			
BKB-7	0	0	0	0	0	0	0	0	0	0	0	0	0	107,750	0	0	1,399
BKB-8	198.43	177	192	161	165	165	166	164	155	161	155	158	2,017	126,261	3,462	4,142	3,536
BKB-9	320.41	280	304	291	285	277	280	279	257	259	250	251	3,332	21,122	3,637	4,160	4,287
BKB-10	121.80	108	117	110	113	108	110	109	101	104	98	98	1,297	3,674	1,453	924	
<b>Field Total:</b>	<b>1,043</b>	<b>928</b>	<b>987</b>	<b>907</b>	<b>915</b>	<b>897</b>	<b>912</b>	<b>906</b>	<b>851</b>	<b>869</b>	<b>836</b>	<b>852</b>	<b>10,903</b>	<b>812,141</b>	<b>13,190</b>	<b>13,070</b>	<b>14,565</b>
<b>Daily Avg.(mmscfd)</b>	34	33	32	30	30	30	29	29	28	28	28	27	30		36	36	40
<b>Field : Bangura</b>																	
Bangura-1	467	403	411	383	379	369	382	327	365	380	367	384	4,615	89,254	4,914	4,886	5,316
Bangura-2	628	552	610	578	697	568	572	498	537	542	497	523	6,802	79,538	7,837	9,200	10,167
Bangura-3	662	587	640	620	625	602	615	542	596	610	573	594	7,265	96,727	8,662	10,038	10,942
Bangura-6	358	322	740	698	358	345	353	311	342	350	329	341	4,847	8,947	4,100		
Bangura-5	759	670	351	342	736	698	699	610	663	674	1,012	1,195	8,410	150,743	9,699	11,514	12,347
<b>Field Total:</b>	<b>2,875</b>	<b>2,533</b>	<b>2,753</b>	<b>2,622</b>	<b>2,794</b>	<b>2,582</b>	<b>2,621</b>	<b>2,287</b>	<b>2,502</b>	<b>2,556</b>	<b>2,777</b>	<b>3,037</b>	<b>31,940</b>	<b>425,208</b>	<b>35,212</b>	<b>35,639</b>	<b>38,773</b>
<b>Daily Avg.(mmscfd)</b>	93	90	89	87	90	86	85	74	83	82	93	98	88		96	98	106
<b>Field : Beani Bazar</b>																	
BB-1	0	0	0	0	0	0	0	0	0	0	0	0	0	35,481	1,023	33	0
BB-2	281	251	279	272	279	271	279	278	269	275	266	277	3,276	59,736	3,282	3,431	3,477
<b>Field Total:</b>	<b>281</b>	<b>251</b>	<b>279</b>	<b>272</b>	<b>279</b>	<b>271</b>	<b>279</b>	<b>278</b>	<b>269</b>	<b>275</b>	<b>266</b>	<b>277</b>	<b>3,276</b>	<b>95,217</b>	<b>4,306</b>	<b>3,464</b>	<b>3,477</b>
<b>Daily Avg.(mmscfd)</b>	9	9	9	9	9	9	9	9	9	9	9	9	9		12	9	10
<b>Field : Bibiyana</b>																	
BY-1	2,807	2,069	2,766	2,778	3,056	2,612	2,980	1,317	334	348	339	337.26	21,743	367,885	35,595	35,050	31,887
BY-2	1,913	1,349	1,823	1,764	1,902	1,567	1,832	1,806	1,874	1,947	1,827	1,782.9	21,388	274,427	23,957	20	16,096
BY-3	637	740	965	672	756	677	992	537	214	2	0	56.15	6,249	235,269	9,904	16,873	19,957
BY-4	1,342	1,062	2,189	2,345	2,924	2,280	2,708	2,552	2,786	2,893	2,786	2,692.5	28,559	180,538	6,571	7,322	11,070
BY-5	364	323	186	70	54	50	790	920	942	859	774	798.62	6,131	171,967	8,117	9,229	10,856
BY-6	1,008	657	986	1,041	967	816	968	730	937	965	1,007	975.36	11,057	221,496	11,879	15,208	16,520
BY-7	471	1,286	1,881	2,468	528	262	2,367	2,685	2,825	2,901	2,773	2,709.3	23,155	244,583	32,874	33,040	10,895
BY-8	785	562	740	790	783	734	784	781	726	792	760	682.43	8,921	134,243	12,486	2,987	5,237
BY-9	53	0	12	0	0	0	274	896	790	744	669	654.22	4,093	124,617	6,247	6,820	7,197

## Monthly Production by Field and Well upto December- 2018



**HYDROCARBON UNIT**  
Energy & Mineral Resources Division

Figures in mmscf

Well	Jan	Feb	Mar	Apr	May	Jun	Jul	Aug	Sep	Oct	Nov	Dec	Total	Cumulative	2017	2016	2015
BY-10	2,605	1,922	2,790	2319	2,895	2,541	2617	2,644	2,716	2,806	2667	2431.3	30,954	334,997	32,967	33,582	32,542
BY-11	550	802	1,035	1042	1,192	1,055	1091	1,061	1,100	1,119	1050	1050.2	12,147	119,961	6,813	9,357	12,458
BY-12	630	437	635	558	613	567	571	592	568	547	554	560.55	6,835	122,703	8,284	10,574	12,677
BY-13	782	768	1,144	1226	1,231	911	1199	1,183	1,208	1,227	1167	1125.3	13,171	72,959	11,842	15,603	19,645
BY-14	1,043	752	1,176	1114	967	741	1038	971	923	924	941	933.46	11,523	90,613	15,354	15,170	25,721
BY-15	2,006	1,399	2,085	1931	2,103	1,807	2111	2,070	2,256	2,198	2164	2166.8	24,295	96,921	19,111	17,698	16,439
BY-16	826	615	878	904	777	617	843	796	821	850	786	550.23	9,264	61,072	12,541	15,844	18,446
BY-17	1,401	885	1,389	1412	1,244	1,420	1401	1,550	1,545	1,674	1851	1831.4	17,603	77,871	15,412	15,463	23,304
BY-18	2,552	1,879	2,613	2665	2,548	2,568	2593	2,696	2,834	3,018	3017	2905.5	31,890	117,802	29,509	33,072	23,332
BY-19	797	588	763	717	653	658	686	635	687	695	648	616.71	8,144	32,078	9,859	9,383	4,691
BY-20	427	513	706	717	691	706	702	664	669	717	684	644.72	7,840	37,845	6,533	9,282	14,190
BY-21	943	688	914	801	847	717	818	799	813	838	778	714.7	9,670	35,224	13,246	8,533	3,775
BY-22	2,150	1,536	2,231	1952	2,174	1,777	2082	2,107	2,147	2,259	2220	2120.9	24,755	107,799	27,093	33,387	22,565
BY-23	2,684	1,990	2,699	2614	2,799	2,368	2756	2,772	2,882	2,956	2786	2737.9	32,043	52,047	15,333	4,405	266
BY-24	1,142	715	1,101	875	1,228	1,205	1254	1,333	1,333	1,175	973	934.97	13,268	58,164	13,484	15,265	13,497
BY-25	2,332	1,855	2,275	2209	2,629	2,223	2344	2,448	2,432	2,643	2541	2373.3	28,306	105,180	30,331	33,282	13,260
BY-26	2,706	2,004	2,775	2533	2,931	2,691	2938	2,985	3,078	3,232	3080	2898.7	33,853	115,565	30,446	33,167	18,099
<b>Field Total:</b>	<b>34958</b>	<b>27394</b>	<b>38761</b>	<b>37517</b>	<b>38490</b>	<b>33568</b>	<b>40738</b>	<b>39531</b>	<b>39439</b>	<b>40330</b>	<b>38844</b>	<b>37285</b>	<b>446,855</b>	<b>3,593,828</b>	<b>445,787</b>	<b>439,615</b>	<b>404,621</b>
<b>Daily Avg.(mmscfd)</b>	1128	978	1250	1251	1242	1119	1314	1,275	1,315	1,301	1,295	1,203	1,224		1,221	1,204	1,109
<b>Field :</b>	<b>Chattak</b>																
Ch-1	Production Suspended													25,834			
<b>Field Total:</b>	<b>0</b>										<b>0</b>		<b>25,834</b>				
<b>Daily Avg.(mmscfd)</b>	<b>0</b>										<b>0</b>		<b>0</b>				
<b>Field :</b>	<b>Fenchuganj</b>																
Fenchuganj-2	0	0	0	0	0	0	0	0	0	0	0	0	0	38,169	0	0	0
Fenchuganj-3	395	352	349	241	239	214	225	224	222	236	235	253	3,186	90,638	6,192	7,606	7,564
Fenchuganj-4	14	30	32	3	20	90	106	106	105	110	105	89	809	29,274	441	3,189	5,834
<b>Field Total:</b>	<b>409</b>	<b>382</b>	<b>381</b>	<b>244</b>	<b>260</b>	<b>304</b>	<b>331</b>	<b>330</b>	<b>327</b>	<b>346</b>	<b>340</b>	<b>342</b>	<b>3,994</b>	<b>158,080</b>	<b>6,633</b>	<b>10,795</b>	<b>13,398</b>
<b>Daily Avg.(mmscfd)</b>	13	14	12	8	8	10	11	11	11	11	11	11	11		18	30	37
<b>Field :</b>	<b>Feni</b>																
Feni-1	Production Suspended									0	0	34,214					
Feni-2	Production Suspended									0	0	6,119					
Feni-3	Production Suspended									0	0	2,176					

## Monthly Production by Field and Well upto December- 2018



**HYDROCARBON UNIT**  
Energy & Mineral Resources Division

Figures in mmscf

Well	Jan	Feb	Mar	Apr	May	Jun	Jul	Aug	Sep	Oct	Nov	Dec	Total	Cumulative	2017	2016	2015				
Feni-4	Production Suspended								0									14,386			
Feni-5	Production Suspended								0									6,127			
<b>Field Total:</b>													<b>63,023</b>								
<b>Daily Avg.(mmscfd)</b>																					
<b>Field :</b>	<b>Habiganj</b>																				
Hbj-1	0	0	0	0	0	0	0	395	456	467	441	448	2,207	278,108	0	0	0				
Hbj-2	0	0	0	0	0	0	0	0	0	0	0	0	0	275,704	0	0	0				
Hbj-3	1,118	1,008	1,120	1084	1,120	1,077	1126	1,122	1,091	1,118	1,074	1,099	13,155	377,157	13,151	13,227	13,080				
Hbj-4	1,118	1,008	1,120	1084	1,120	1,077	1126	1,122	1,091	1,118	1,074	1,099	13,155	371,615	13,151	13,227	13,080				
Hbj-5	808	728	809	783	809	778	813	812	788	807	773	791	9,497	297,674	9,497	9,552	9,446				
Hbj-6	467	421	468	453	468	450	470	468	455	466	446	456	5,487	162,209	5,491	5,523	5,462				
Hbj-7	1,243	1,126	1,243	1201	1,241	1,196	1234	1,233	1,189	1,229	1,193	1,205	14,533	253,119	14,565	14,685	14,659				
Hbj-8	0	0	0	0	0	0	0	0	0	0	0	0	0	11,023	0	0	0				
Hbj-9	0	0	0	0	0	0	0	0	0	0	0	0	0	52,652	0	0	0				
Hbj-10	1,196	1,084	1,196	1156	1,195	1,151	1188	1,186	1,145	1,183	1,142	1,106	13,928	253,133	14,058	14,629	14,659				
Hbj-11	839	760	839	811	838	807	834	832	781	768	744	724	9,579	96,308	10,398	11,247	11,367				
<b>Field Total:</b>	<b>6,790</b>	<b>6,135</b>	<b>6,793</b>	<b>6,572</b>	<b>6,792</b>	<b>6,535</b>	<b>6790</b>	<b>7,169</b>	<b>6,995</b>	<b>7,156</b>	<b>6,886</b>	<b>6,927</b>	<b>81,540</b>	<b>2,428,701</b>	<b>80,313</b>	<b>82,091</b>	<b>81,752</b>				
<b>Daily Avg.(mmscfd)</b>	219	219	219	219	219	218	219	231	233	231	230	223	223		220	225	224				
<b>Field :</b>	<b>Jalalabad</b>																				
JB-1	1,048	791	800	871	898	857	898	829	860	891	860	865	10,469	245,769	9,142	11,951	18,014				
JB-2	1,140	1,054	1,130	1086	1,115	1,027	1115	986	1,071	1,106	1,068	1,074	12,973	279,596	14,517	17,057	20,012				
JB-3	1,510	1,414	1,515	1448	1,487	1,413	1487	1,372	1,424	1,473	1,424	1,432	17,399	340,524	19,162	21,086	26,552				
JB-4	586	568	621	452	465	440	465	429	444	461	445	446	5,821	279,000	7,045	8,313	20,427				
JB-6	1,510	1,415	1,513	1448	1,487	1,412	1487	1,340	1,423	1,477	1,422	1,431	17,364	59,325	19,524	19,136	3,300				
JB-7	1,202	1,021	1,159	1086	1,115	1,058	1115	980	1,069	1,106	1,068	1,074	13,053	29,390	10,324	5,254	760				
JB-8	1,125	1,026	1,098	1071	1,099	1,051	1100	967	1,053	1,091	1,053	1,059	12,793	43,930	14,513	16,252	372				
<b>Field Total:</b>	<b>8,121</b>	<b>7,290</b>	<b>7,836</b>	<b>7,461</b>	<b>7,665</b>	<b>7,257</b>	<b>7667</b>	<b>6,903</b>	<b>7,345</b>	<b>7,605</b>	<b>7,341</b>	<b>7,382</b>	<b>89,872</b>	<b>1,277,534</b>	<b>94,226</b>	<b>99,048</b>	<b>89,437</b>				
<b>Daily Avg.(mmscfd)</b>	262	260	253	249	247	242	247	223	245	245	245	238	246		258	271	245				
<b>Field :</b>	<b>Kailas Tila</b>																				
KTL-1	0	0	0	0	0	0	0	0	0	0	215	247	462	204,809	0	0	0				

## Monthly Production by Field and Well upto December- 2018



**HYDROCARBON UNIT**  
Energy & Mineral Resources Division

Figures in mmscf

Well	Jan	Feb	Mar	Apr	May	Jun	Jul	Aug	Sep	Oct	Nov	Dec	Total	Cumulative	2017	2016	2015
KTL-2	620	555	611	592	609	594	611	611	594	610	586	598	7,190	178,147	7,242	7,282	7,111
KTL-3	279	226	249	240	248	241	248	249	240	248	239	239	2,947	137,820	3,255	5,003	5,920
KTL-4	293	261	289	279	291	283	292	292	277	276	253	251	3,336	96,095	3,680	3,499	4,009
KTL-5	0	0	0	0	0	0	0	0	0	0	0	0	0	17,923	0	0	0
KTL-6	768	683	758	732	755	738	760	766	741	765	736	746	8,950	91,089	9,086	8,975	8,732
KTL-7	0	0	0	0	0	0	0	0	0	0	0	0	0	816	0	329	487
<b>Field Total:</b>	<b>1,961</b>	<b>1,724</b>	<b>1,907</b>	<b>1,844</b>	<b>1,904</b>	<b>1,856</b>	<b>1,911</b>	<b>1,917</b>	<b>1,852</b>	<b>1,899</b>	<b>2,031</b>	<b>2,081</b>	<b>22,886</b>	<b>726,699</b>	<b>23,263</b>	<b>25,088</b>	<b>26,259</b>
<b>Daily Avg.(mmscfd)</b>	63	62	62	61	61	62	62	62	62	61	68	67	63		64	69	72
<b>Field :</b>	<b>Kamta</b>																
Kamta-1	Production Suspended													<b>21,139</b>			
<b>Field Total:</b>														<b>21,139</b>			
<b>Daily Avg.(mmscfd)</b>																	
<b>Field :</b>	<b>Meghna</b>																
M-1	396	356	390	380	385	377	383	383	370	380	366	373	4,538	68,974	4,625	4,425	3,838
<b>Field Total:</b>	<b>396</b>	<b>356</b>	<b>390</b>	<b>380</b>	<b>385</b>	<b>377</b>	<b>383</b>	<b>383</b>	<b>370</b>	<b>380</b>	<b>366</b>	<b>373</b>	<b>4,538</b>	<b>68,974</b>	<b>4,625</b>	<b>4,425</b>	<b>3,838</b>
<b>Daily Avg.(mmscfd)</b>	13	13	13	13	12	13	12	12	12	12	12	12	12		13	12	11
<b>Field :</b>	<b>Moulavi Bazar</b>																
MV Bazar-2	217	191	218	215	216	142	220	200	182	190	165	146	2,302	54,038	2,866	3,201	2,889
MV Bazar-3	356	318	343	334	332	230	344	312	322	289	277	255	3,712	157,809	4,705	5,394	6,116
MV Bazar-4	254	238	301	329	359	240	309	257	210	213	193	199	3,103	58,067	3,945	4,141	2,927
MV Bazar-5	Production Suspended		0	0	0	0	0	0	0	0	0	0		66			
MV Bazar-6	174	156	175	168	180	127	174	151	118	103	89	118	1,734	16,349	1,676	1,737	2,198
MV Bazar-7	4	3	3	2	3	1	2	2	0	0	0	0	21	5,644	152	123	1,433
MV Bazar-9	0	1	0	0	0	0	0	0	0	0	0	0	1	30,335	0	41	474
<b>Field Total:</b>	<b>1,005</b>	<b>907</b>	<b>1,039</b>	<b>1,049</b>	<b>1,091</b>	<b>740</b>	<b>1050</b>	<b>921</b>	<b>833</b>	<b>795</b>	<b>725</b>	<b>718</b>	<b>10,872</b>	<b>322,308</b>	<b>13,345</b>	<b>14,638</b>	<b>16,037</b>
<b>Daily Avg.(mmscfd)</b>	32	32	34	35	35	25	34	30	28	26	24	23	30		37	40	44
<b>Field :</b>	<b>Narshingdi</b>																
N-1	535	479	523	511	524	493	526	528	515	536	506	506	6,181	144,595	6,279	6,242	6,239
N-2	308	282	321	309	319	297	314	313	300	313	314	315	3,705	55,370	3,962	4,122	3,914

## Monthly Production by Field and Well upto December- 2018



**HYDROCARBON UNIT**  
Energy & Mineral Resources Division

Figures in mmscf

Well	Jan	Feb	Mar	Apr	May	Jun	Jul	Aug	Sep	Oct	Nov	Dec	Total	Cumulative	2017	2016	2015
<b>Field Total:</b>	<b>843</b>	<b>761</b>	<b>845</b>	<b>820</b>	<b>843</b>	<b>790</b>	<b>840</b>	<b>840</b>	<b>815</b>	<b>849</b>	<b>820</b>	<b>821</b>	<b>9,886</b>	<b>199,964</b>	<b>10,241</b>	<b>10,364</b>	<b>10,154</b>
<b>Daily Avg.(mmscfd)</b>	27	27	27	27	27	26	27	27	27	27	27	26	27		28	28	28
<b>Field : Rashidpur</b>																	
RP-1	568	508	562	538	554	507	549	570	539	549	527	535	6,505	167,063	6,625	6,639	6,423
RP-2	0	0	0	0	0	0	0	0	0	0	0	0		82,474			
RP-3	307	276	303	291	302	291	301	298	288	298	288	298	3,541	131,208	3,730	3,877	4,177
RP-4	289	259	284	273	281	244	276	270	260	268	258	266	3,227	127,895	3,516	3,675	3,683
RP-5	0	0	0	0	0	0	0	0	0	0	0	0		25,647			
RP-6	0	0	0	0	0	0	0	0	0	0	0	0	0	9,983	0	0	0
RP-7	187	169	186	178	185	158	182	172	167	174	168	172	2,096	64,325	2,225	2,355	2,236
RP-8	318	287	316	303	306	302	315	313	305	314	302	314	3,696	19,033	3,977	4,422	5,115
<b>Field Total:</b>	<b>1,668</b>	<b>1,498</b>	<b>1,650</b>	<b>1,583</b>	<b>1,628</b>	<b>1,502</b>	<b>1,623</b>	<b>1,623</b>	<b>1,559</b>	<b>1,603</b>	<b>1,543</b>	<b>1,586</b>	<b>19,065</b>	<b>627,628</b>	<b>20,074</b>	<b>20,969</b>	<b>21,634</b>
<b>Daily Avg.(mmscfd)</b>	54	54	53	53	53	50	52	52	52	52	51	51	52		55	57	59
<b>Field : Salda Nadi</b>																	
Salda-1	0	0	0	0	0	0	0	0	0	0	0	0	0	36,904	0	0	0
Salda-2	0	0	0	0	0	0	0	0	0	0	0	0	0	28,495	0	0	0
Salda-3	49	52	54	54	56	53	86	139	139	132	125	128	1,067	25,580	1,514	2,350	3,546
Salda-4	10	7	5	6	6	5	13	4	3	5	1	5	70	117	14	34	
<b>Field Total:</b>	<b>59</b>	<b>59</b>	<b>59</b>	<b>59</b>	<b>62</b>	<b>58</b>	<b>99</b>	<b>143</b>	<b>142</b>	<b>138</b>	<b>126</b>	<b>133</b>	<b>1,137</b>	<b>91,096</b>	<b>1,527</b>	<b>2,383</b>	<b>3,546</b>
<b>Daily Avg.(mmscfd)</b>	2	2	2	2	2	2	3	5	5	4	4	4	3		4	7	10
<b>Field : Sangu</b>																	
Sangu-1	0	0	0	0	0	0	0	0	0	0	0	0	0	116,191	0	0	0
Sangu-3z	0	0	0	0	0	0	0	0	0	0	0	0	0	131,796	0	0	0
Sangu-4	Production Suspended						0	0	0	0	0	0	0	87,280			
Sangu-5	Production Suspended						0	0	0	0	0	0	0	61,674			
Sangu-7	Production Suspended						0	0	0	0	0	0	0	18,202			
Sangu-8	Production Suspended						0	0	0	0	0	0	0	37,619			
Sangu-9	0	0	0	0	0	0	0	0	0	0	0	0	0	30,638	0	0	0
Sangu-10	Production Suspended						0	0	0	0	0	0	0				
Sangu-11	0	0	0	0	0	0	0	0	0	0	0	0	0	6,067	0	0	0

## Monthly Production by Field and Well upto December- 2018



**HYDROCARBON UNIT**  
Energy & Mineral Resources Division

Figures in mmscf

Well	Jan	Feb	Mar	Apr	May	Jun	Jul	Aug	Sep	Oct	Nov	Dec	Total	Cumulative	2017	2016	2015
<b>Field Total:</b>	<b>0</b>	<b>0</b>	<b>0</b>	<b>0</b>	<b>0</b>	<b>0</b>	<b>0</b>	<b>0</b>	<b>0</b>	<b>0</b>	<b>0</b>	<b>0</b>	<b>0</b>	<b>489,467</b>	<b>0</b>	<b>0</b>	<b>0</b>
<b>Daily Avg.(mmscfd)</b>	0	0	0	0	0	0	0	0	0	0	0	0	0		0	0	0
<b>Field : Semutang</b>																	
Semutang-5	39	31	39	33	29	25	23	16	17	15	13	12	291	12,065	471	946	1,389
Semutang-6	8	7	8	7	6	6	6	6	6	8	7	8	84	956	66	0	15
<b>Field Total:</b>	<b>47</b>	<b>37</b>	<b>47</b>	<b>40</b>	<b>36</b>	<b>30</b>	<b>29</b>	<b>22</b>	<b>23</b>	<b>23</b>	<b>21</b>	<b>20</b>	<b>375</b>	<b>13,021</b>	<b>537</b>	<b>946</b>	<b>1,403</b>
<b>Daily Avg.(mmscfd)</b>	2	1	2	1	1	1	1	1	1	1	1	1	1		1	3	4
<b>Field : Shahbazpur</b>																	
Shahbazpur-1	134	0	0	0	0	0	0	0	0	0	0	0	134	21,358	4,835	3,623	2,268
Shahbazpur-2	324	5	423	598	648	689	728	708	696	677	573	582	6,650	11,082	4,243	189	0
Shahbazpur-3	291	444	453	369	406	471	472	500	478	490	387	460	5,222	12,326	1,162	3,116	2,826
Shahbazpur-4	452	647	643	458	599	592	616	631	618	620	565	495	6,936	13,003	1,801	1,091	3,175
<b>Field Total:</b>	<b>1,202</b>	<b>1,095</b>	<b>1,519</b>	<b>1,425</b>	<b>1,653</b>	<b>1,753</b>	<b>1,816</b>	<b>1,839</b>	<b>1,792</b>	<b>1,787</b>	<b>1,525</b>	<b>1,536</b>	<b>18,943</b>	<b>57,770</b>	<b>12,041</b>	<b>8,019</b>	<b>8,269</b>
<b>Daily Avg.(mmscfd)</b>	39	39	49	47	53	58	59	59	60	58	51	50	52		33	22	23
<b>Field : Srikail</b>																	
Srikail-2	440	403	435	423	430	409	439	418	437	453	412	457	5,154	37,944	5,384	6,064	6,150
Srikail-3	382	340	378	359	369	350	364	356	357	347	313	358	4,273	34,832	4,944	6,607	7,919
Srikail-4	265	239	264	250	258	237	244	240	251	243	217	261	2,971	8,445	3,439	2,035	
<b>Field Total:</b>	<b>1,086</b>	<b>982</b>	<b>1,077</b>	<b>1,032</b>	<b>1,057</b>	<b>996</b>	<b>1,047</b>	<b>1,014</b>	<b>1,045</b>	<b>1,043</b>	<b>941</b>	<b>1,076</b>	<b>12,398</b>	<b>81,221</b>	<b>13,767</b>	<b>14,707</b>	<b>14,070</b>
<b>Daily Avg.(mmscfd)</b>	35	35	35	34	34	33	34	33	35	34	31	35	34		38	40	39
<b>Field : Sundalpur</b>																	
Sundalpur -1	0	0	0	0	0	0	0	0	0	0	0	0	0	9,809	0	552	1,425
Sundalpur -2	51	142	158	178	207	200	208	210	203	210	202	206	2,176	2,176	0	0	0
<b>Field Total:</b>	<b>51</b>	<b>142</b>	<b>158</b>	<b>178</b>	<b>207</b>	<b>200</b>	<b>208</b>	<b>210</b>	<b>203</b>	<b>210</b>	<b>202</b>	<b>206</b>	<b>2,176</b>	<b>11,985</b>	<b>0</b>	<b>552</b>	<b>1,425</b>
<b>Daily Avg.(mmscfd)</b>	2	5	5	6	7	7	7	7	7	7	7	7	6		0	2	4
<b>Field : Sylhet</b>																	
Sylhet-3	Production Suspended													89,032			
Sylhet-6	Production Suspended													91,748			



## Monthly Production by Field and Well upto December- 2018



**HYDROCARBON UNIT**  
Energy & Mineral Resources Division

Figures in mmscf

Well	Jan	Feb	Mar	Apr	May	Jun	Jul	Aug	Sep	Oct	Nov	Dec	Total	Cumulative	2017	2016	2015
Sylhet-7	146	133	138	134	136	131	135	135	131	134	132	137	1,622	26,990	2,061	2,212	2,239
Surma-1	0	0	0	0	0	0	0	0	0		0	0	0	6,528	249	720	791
<b>Field Total:</b>	<b>146</b>	<b>133</b>	<b>138</b>	<b>134</b>	<b>136</b>	<b>131</b>	<b>135</b>	<b>135</b>	<b>131</b>	<b>134</b>	<b>132</b>	<b>137</b>	<b>1,622</b>	<b>214,298</b>	<b>2,309</b>	<b>2,932</b>	<b>3,031</b>
<b>Daily Avg.(mmscfd)</b>	5	5	4	4	4	4	4	4	4	4	4	4	4		6	8	8
<b>Field :</b>	<b>Titas</b>																
Titas-1	758	665	743	767	786	702	722	691	668	688	672	655	8,516	439,629	7,897	9,999	10,555
Titas-2	1,022	875	956	949	972	923	996	987	963	985	947	948	11,522	435,505	11,506	11,474	13,015
Titas-3	Production Suspended			0	0	0	0	0	0	0	0	0	0	314,888			
Titas-4	1,001	892	964	960	1,000	945	1009	994	970	995	995	1,000	11,726	370,451	11,798	12,782	12,882
Titas-5	1,016	902	984	1002	1,002	944	1004	991	969	999	1,000	1,024	11,838	428,252	11,869	10,692	13,118
Titas-6	997	919	1,053	1036	1,065	964	1027	1,005	991	1,004	973	996	12,030	363,128	12,029	12,809	12,958
Titas-7	1,041	924	1,003	988	1,040	988	1025	998	1,007	1,015	921	970	11,919	344,864	11,707	12,125	12,259
Titas-8	524	472	523	521	542	490	526	531	515	510	501	498	6,154	272,636	6,889	7,046	7,162
Titas-9	586	508	552	546	580	552	587	567	580	581	536	530	6,706	276,489	8,246	8,467	8,355
Titas-10	651	583	639	631	652	611	651	650	630	649	630	636	7,612	199,001	7,431	4,350	2,425
Titas-11	892	812	915	877	837	786	778	743	820	831	869	839	9,998	246,901	10,276	9,075	10,129
Titas-12	415	395	436	421	437	417	433	433	422	432	450	468	5,160	100,775	5,168	5,326	5,218
Titas-13	623	555	619	599	613	606	605	557	508	534	562	572	6,952	190,092	7,879	9,553	10,106
Titas-14	673	590	645	631	652	593	609	571	566	563	566	545	7,203	149,986	8,309	8,888	9,582
Titas-15	433	404	463	490	507	467	487	471	468	467	445	441	5,543	139,514	7,973	11,777	12,315
Titas-16	782	677	747	726	745	704	738	716	717	712	671	670	8,605	146,346	10,060	11,333	11,966
Titas-17	556	499	560	539	547	533	542	509	523	533	488	506	6,335	39,503	7,011	7,359	7,080
Titas-18	587	527	589	569	572	558	558	539	553	561	513	539	6,664	38,006	7,168	7,338	7,075
Titas-19	516	481	529	516	534	511	525	519	504	491	487	502	6,115	28,049	6,106	6,253	6,309
Titas-20	321	291	323	311	534	308	309	311	302	314	292	300	3,914	18,828	3,635	3,645	3,604
Titas-21	249	224	248	240	255	254	261	260	253	250	241	259	2,995	9,232	2,800	1,572	0
Titas-22	373	335	363	348	360	355	373	355	336	342	328	290	4,158	24,418	4,336	5,497	6,468
Titas-27	508	458	496	481	496	478	496	485	479	493	475	483	5,827	28,839	6,136	6,233	6,193
Titas-23	485	442	487	461	474	458	469	463	450	473	444	490	5,594	10,005	4,410		
Titas-24	248	224	248	236	236	228	224	227	215	217	202	203	2,709	4,992	2,283		
Titas-25	532	479	534	521	543	527	542	549	530	539	510	518	6,324	12,215	5,622	269	
Titas-26	816	742	832	805	826	797	827	819	786	813	791	819	9,672	19,265	9,210	383	

## Monthly Production by Field and Well upto December- 2018



**HYDROCARBON UNIT**  
Energy & Mineral Resources Division

Figures in mmscf

Well	Jan	Feb	Mar	Apr	May	Jun	Jul	Aug	Sep	Oct	Nov	Dec	Total	Cumulative	2017	2016	2015
<b>Field Total:</b>	16,604	14,874	16,451	16,171	16,807	15,699	16,320	15,941	15,726	15,990	15,509	15,700	191,792	4,651,807	197,756	184,246	188,773
<b>Daily Avg.(mmscfd)</b>	536	531	531	539	542	523	526	514	524	516	517	506	525		542	505	517
<b>Field : Begumganj</b>																	
Begumganj-3	0	0	0	0	0	0	0	0	69	171	179	174	593	1,470	0	85	791
<b>Field Total:</b>	<b>0</b>	<b>0</b>	<b>0</b>	<b>0</b>	<b>0</b>	<b>0</b>	<b>0</b>	<b>0</b>	<b>69</b>	<b>171</b>	<b>179</b>	<b>174</b>	<b>593</b>	<b>1,470</b>	<b>0</b>	<b>85</b>	<b>791</b>
<b>Daily Avg.(mmscfd)</b>	0	0	0	0	0	0	0	0	2	6	6	6	2		0	0	2
<b>Field : Rupganj</b>																	
Rupganj-1	0	0											0	679	679		
<b>Field Total:</b>	<b>0</b>	<b>0</b>	<b>0</b>	<b>0</b>	<b>0</b>	<b>0</b>	<b>0</b>	<b>0</b>	<b>0</b>	<b>0</b>	<b>0</b>	<b>0</b>	<b>0</b>	<b>679</b>	<b>679</b>		
<b>Daily Avg.(mmscfd)</b>	0	0	0	0	0	0	0	0	0	0	0	0	0		2		
<b>Grand Total (in Bcf)</b>	79.54	67.48	83.07	80.31	83.00	75.55	85	82.39	82.29	84.16	81.41	80.66	964.7	16,459.1	979.8	973.1	945.3
<b>Daily Avg.(mmscfd)</b>	2,566	2,410	2,680	2,677	2,678	2,518	2736	2,658	2,743	2,715	2,714	2,602	2,643		2,684	2,666	2,590

## Monthly Condensate Production by Fields upto December 2018



Field Name	Jan-18	Feb-18	Mar-18	Apr-18	May-18	Jun-18	Jul-18	Aug-18	Sep-18	Oct-18	Nov-18	Dec-18	Total	Cumulative	2017	2016	2015	
														000' bbl				
Bakhrabad	574	499	381	360	391	390	415	418	362	371	360	501	5,022	1,020	6,173	7,091	6,632	
Daily Avg.	19	18	12	12	13	13	13	13	12	12	12	16	14		17	229	214	
Bangura	8,773	7,740	7,919	7,772	7,948	7,593	7,633	6,683	7,336	7,574	8,398	9,368	94,737	1,065	103,198	103,416	108,140	
Daily Avg.	283	276	255	259	256	253	246	216	245	244	280	302	260		283	3,336	3,488	
Beani Bazar	4,559	3,897	4,497	4,321	4,461	4,239	4,304	4,208	4,039	4,241	4,152	4,268	51,187	1,567	68,202	56,146	55,563	
Daily Avg.	147	139	145	144	144	141	139	136	135	137	138	138	140		187	1,811	1,792	
Bibiyana	287,672	261,508	280,664	276,022	277,580	241,906	279,694	278,110	272,978	277,617	269,303	264,265	3,267,318	21,154	3,283,757	3,291,906	2,277,248	
Daily Avg.	9,280	9,340	9,054	9,201	8,954	8,064	9,022	8,971	9,099	8,955	8,977	8,525	8,952		8,997	106,191	73,460	
Chattak	0	0	0	0	0	0	0	0	0	0	0	0	0	4				
Daily Avg.	0	0	0	0	0	0	0	0	0	0	0	0	0					
Fenchuganj	143	123	135	96	141	121	139	167	144	144	130	142	1,625	115	2,462	6,138	8,895	
Daily Avg.	5	4	4	3	5	4	4	5	5	5	4	5	4		7	198	287	
Feni	0	0	0	0	0	0	0	0	0	0	0	0	0	110	0	0	0	
Daily Avg.	0	0	0	0	0	0	0	0	0	0	0	0	0		0	0	0	
Habiganj	337	303	337	327	327	329	319	574	770	710	621	658	5,612	130	3,955	4,143	4,075	
Daily Avg.	11	11	11	11	11	11	10	19	26	23	21	21	15		11	134	131	
Jalalabad	35,294	31,133	33,027	30,950	31,442	29,727	31,062	28,287	28,936	28,875	28,751	29,676	367,160	10,139	437,070	528,191	577,549	
Daily Avg.	1,139	1,112	1,065	1,032	1,014	991	1,002	912	965	931	958	957	1,006		1,197	17,038	18,631	
Kailas Tila	16,735	19,090	17,805	14,349	15,754	15,786	13,661	14,201	15,412	15,341	16,239	15,249	189,620	7,795	203,979	223,169	250,829	
Daily Avg.	540	682	574	478	508	526	441	458	514	495	541	492	520		559	7,199	8,091	
Kamta	Production Suspended										0	0		4				
Daily Avg.											0	0		0		0		
Meghna	649	587	660	641	687	655	667	667	828	679	604	623	7,947	107	7,741	7,735	6,952	
Daily Avg.	21	21	21	21	22	22	22	22	28	22	20	20	22		21	250	224	
Moulavi Bazar	109	90	89	77	83	49	74	67	68	65	3	82	856	117	1,128	1,585	1,606	
Daily Avg.	4	3	3	3	3	2	2	2	2	2	0	3	2		3	51	52	

## Monthly Condensate Production by Fields upto December 2018



Field Name	Jan-18	Feb-18	Mar-18	Apr-18	May-18	Jun-18	Jul-18	Aug-18	Sep-18	Oct-18	Nov-18	Dec-18	Total	Cumulative	2017	2016	2015
														000' bbl			
Narshingdi	1,390	1,226	1,359	1,329	1,388	1,288	1,364	1,308	1,297	1,324	1,260	1,264	15,797	418	16,656	17,534	17,840
Daily Avg.	45	44	44	44	45	43	44	42	43	43	42	41	43		46	566	575
Rashidpur	718	564	966	1,136	1,423	1,282	1,361	1,497	1,522	1,449	1,292	1,183	14,393	776	10,723	14,938	17,853
Daily Avg.	23	20	31	38	46	43	44	48	51	47	43	38	39		29	482	576
Saldanadi	0	2	0	0	0	0	10	64	15	14	14	17	137	58	225	386	550
Daily Avg.	0	0	0	0	0	0	0	2	0	0	0	1	0		1	12	18
Sangu	0	0	0	0	0	0	0	0	0	0	0	0	0	37	0	0	0
Daily Avg.	0	0	0	0	0	0	0	0	0	0	0	0	0		0	0	0
Semutang	0	3	4	6	3	1	4	0	1	1	3	0	26	5	99	272	531
Daily Avg.	0	0	0	0	0	0	0	0	0	0	0	0	0		0	9	17
Shahbazpur	181	145	198	171	201	203	206	271	259	262	208	182	2,488	6	1,791	839	816
Daily Avg.	6	5	6	6	6	7	7	9	9	8	7	6	7		5	27	26
Srikail	2,966	2,608	2,924	2,812	2,578	2,650	2,825	2,804	2,883	2,994	2,573	3,149	33,765	128	37,879	21,075	10,527
Daily Avg.	96	93	94	94	83	88	91	90	96	97	86	102	93		104	680	340
Sundalpur	0	3	5	3	2	2	2	20	51	14	8	10	121	0	0	0	39
Daily Avg.	0	0	0	0	0	0	0	1	2	0	0	0	0		0	0	1
Sylhet	987	772	650	932	931	851	868	776	708	821	993	988	10,277	796	15,593	20,532	22,261
Daily Avg.	32	28	21	31	30	28	28	25	24	26	33	32	28		43	662	718
Titas	14,787	13,325	13,121	13,763	13,841	12,515	12,992	13,049	12,911	13,041	12,862	13,596	159,803	5,224	154,262	133,133	134,637
Daily Avg.	477	476	423	459	446	417	419	421	430	421	429	439	438		423	4,295	4,343
Begumganj	0	0	0	0	0	0	0	0	19	54	64	64	201	0	0	0	143
Daily Avg.	0	0	0	0	0	0	0	0	0	2	2	2	1		0	0	5
Rupganj	0	0	0	0	0	0	0	0	0	0	0	0	0	1	1,133		
Daily Avg.	0	0	0	0	0	0	0	0	0	0	0	0	0		3		
<b>Total (000'bbl)</b>	<b>376</b>	<b>344</b>	<b>365</b>	<b>355</b>	<b>359</b>	<b>320</b>	<b>358</b>	<b>353</b>	<b>351</b>	<b>356</b>	<b>348</b>	<b>345</b>	<b>4,228</b>	<b>50,777</b>	<b>4,356</b>	<b>4,438</b>	<b>3,499</b>
<b>Daily Avg. (000'bbl)</b>	<b>12.1</b>	<b>12.3</b>	<b>11.8</b>	<b>11.8</b>	<b>11.6</b>	<b>11</b>	<b>11.5</b>	<b>11.4</b>	<b>11.7</b>	<b>11.5</b>	<b>12</b>	<b>11</b>	<b>12</b>		<b>11.9</b>	<b>12.2</b>	<b>9.6</b>

Note: Historical condensate figure of Sangu available from 2006. Sylhet available from August 1964

## Monthly Water Production by Fields in December 2018



Field Name	Jan-18	Feb-18	Mar-18	Apr-18	May-18	Jun-18	Jul-18	Aug-18	Sep-18	Oct-18	Nov-18	Dec-18	Total	
Bakhrabad	2,868	2,279	2,356	2,280	2,356	2,304	2,440	2,433	2,202	2,232	2,160	2,308	28,218	2,017
Daily Avg.	93	81	76	76	76	77	79	78	73	72	72	74	77	8,419
Bangura	3,961	3,560	3,864	3,712	3,852	3,756	3,846	3,369	3,718	3,806	3,223	3,250	43,917	11,705
Daily Avg.	128	127	125	124	124	125	124	109	124	123	107	105	120	
Beani Bazar	8,498	7,789	8,836	8,831	9,311	9,171	9,518	9,589	9,385	9,662	9,408	9,856	109,854	24,865
Daily Avg.	274	278	285	294	300	306	307	309	313	312	314	318	301	
Bibiyana	16,080	14,564	17,086	15,346	16,210	14,753	17,196	16,040	16,990	17,183	16,629	16,574	194,651	47,219
Daily Avg.	519	520	551	512	523	492	555	517	566	554	554	535	533	
Chattak	0	0	0	0	0	0	0	0	0	0	0	0		
Daily Avg.	0	0	0	0	0	0	0	0	0	0	0	0	0	
Fenchuganj	2,499	2,423	2,553	2,165	3,234	6,760	7,890	8,606	8,974	9,746	10,492	9,630	74,969	6,700
Daily Avg.	81	87	82	72	104	225	255	278	299	314	350	311	205	
Feni	0	0	0	0	0	0	0	0	0	0	0	0	0	0
Daily Avg.	0	0	0	0	0	0	0	0	0	0	0	0	0	0
Habiganj	1,760	1,580	1,772	1,706	1,706	2,721	3,723	4,079	4,201	4,675	5,215	5,966	39,104	5,197
Daily Avg.	57	56	57	57	55	91	120	132	140	151	174	192	107	
Jalalabad	4,132	4,539	4,717	4,495	4,616	4,662	4,990	4,635	4,794	4,858	4,731	4,782	55,950	12,915
Daily Avg.	133	162	152	150	149	155	161	150	160	157	158	154	153	
Kailas Tila	3,037	3,171	3,589	3,477	3,620	3,565	2,876	2,883	3,563	3,736	5,832	3,885	43,233	6,809
Daily Avg.	98	113	116	116	117	119	93	93	119	121	194	125	118	
Kamta	0	0	0	0	0	0	0	0	0	0	0	0		
Daily Avg.	0	0	0	0	0	0	0	0	0	0	0	0	0	
Meghna	173	168	173	173	175	164	166	165	164	166	161	166	2,014	551
Daily Avg.	6	6	6	6	6	5	5	5	5	5	5	5	6	
Moulavi Baza	326	268	268	657	355	401	892	1,518	2,379	2,084	2,929	1,888	13,965	754
Daily Avg.	11	10	9	22	11	13	29	49	79	67	98	61	38	
Narshingdi	888	798	884	857	884	844	885	885	854	884	856	855	10,374	2,645
Daily Avg.	29	29	29	29	29	28	29	29	28	29	29	28	28	
Rashidpur	10,397	9,335	10,279	9,865	10,982	10,829	12,023	12,469	12,193	12,954	12,815	13,265	137,406	30,969
Daily Avg.	335	333	332	329	354	361	388	402	406	418	427	428	376	
Saldanadi	8	7	0	0	0	0	83	151	147	142	138	137	813	387
Daily Avg.	0	0	0	0	0	0	3	5	5	5	5	4	2	

## Monthly Water Production by Fields in December 2018



Field Name	Jan-18	Feb-18	Mar-18	Apr-18	May-18	Jun-18	Jul-18	Aug-18	Sep-18	Oct-18	Nov-18	Dec-18	Total	
Sangu	0	0	0	0	0	0	0	0	0	0	0	0	0	2,017
Daily Avg.	0	0	0	0	0	0	0	0	0	0	0	0	0	0
Semutang	416	302	388	379	281	248	288	210	153	174	119	47	3,002	719
Daily Avg.	13	11	13	13	9	8	9	7	5	6	4	2	8	
Shahbazpur	1,390	1,193	1,646	1,513	1,800	2,103	2,228	2,258	2,154	2,139	1,837	1,849	22,110	3,912
Daily Avg.	45	43	53	50	58	70	72	73	72	69	61	60	61	
Srikail	1,619	1,439	1,542	1,446	1,509	1,484	1,530	1,570	1,594	1,593	1,429	1,676	18,432	4,904
Daily Avg.	52	51	50	48	49	49	49	51	53	51	48	54	50	
Sundalpur	3	7	15	16	13	12	15	23	46	28	19	22	219	0
Daily Avg.	0	0	0	1	0	0	0	1	2	1	1	1	1	
Sylhet	837	891	1,143	1,474	1,631	1,577	1,816	1,964	2,097	2,324	2,265	2,343	20,362	1,298
Daily Avg.	27	32	37	49	53	53	59	63	70	75	75	76	56	
Titas	47,689	42,663	47,259	46,962	49,032	47,725	48,956	46,485	43,989	45,238	45,331	45,279	556,608	126,334
Daily Avg.	1,538	1,524	1,524	1,565	1,582	1,591	1,579	1,500	1,466	1,459	1,511	1,461	1,525	
Begumganj	0	0	0	0	0	0	0	0	27	68	58	55	207	0
Daily Avg.	0	0	0	0	0	0	0	0	1	2	2	2	1	
Rupganj	0	0	0	0	0	0	0	0	0	0	0	0	0	34
Daily Avg.	0	0	0	0	0	0	0	0	0	0	0	0	0	
<b>Total (000'bl)</b>	<b>106,580</b>	<b>96,975</b>	<b>108,371</b>	<b>105,354</b>	<b>111,567</b>	<b>113,079</b>	<b>121,360</b>	<b>119,331</b>	<b>119,623</b>	<b>123,692</b>	<b>125,644</b>	<b>123,832</b>	<b>1,375,408</b>	<b>296</b>
<b>Daily Avg. (000'bbl)</b>	<b>3,438</b>	<b>3,463</b>	<b>3,496</b>	<b>3,512</b>	<b>3,599</b>	<b>3,769</b>	<b>3,915</b>	<b>3,849</b>	<b>3,987</b>	<b>3,990</b>	<b>4,188</b>	<b>3,995</b>	<b>3,768</b>	<b>1</b>

## Conditions of Field and Well upto December 2018



Well	company	well type	Discovery	production start	Drilled depth (ft)	Pressure	Pressure type	Completion Zone
<b>Field : Bakharabad</b>								
BKB-1	BGFCL	Vertical	1969	June,1969	9309		FWHP	J
BKB-2	BGFCL	Directional	1969	October,1981	7496	248-274	FWHP	G
BKB-3	BGFCL	Directional	1969	April,1982	9339	356-412	FWHP	G
BKB-4	BGFCL	Directional	1969	June,1982	9430			D
BKB-5	BGFCL	Directional	1969	Sept,1982	9675	1555-1646	FWHP	B
BKB-6	BGFCL	Directional	1969	March,1989	8785			J
BKB-7	BGFCL	Directional	1969	July,1989	8605		FWHP	J
BKB-8	BGFCL	Directional	1969	Sept,1989	8840	490-523	FWHP	J
BKB-9	BGFCL	Vertical	1969	August,2013	8318	1005-1097	FWHP	G
BKB-10	BGFCL	Directional	1969	June,2016	9291	1010-1102	FWHP	K
<b>Field : Bangura</b>								
Bangura-1	Tullow		2004			887-940	FWHP	D
Bangura-2	Tullow		2004			587-685	FWHP	D/E
Bangura-3	Tullow		2004			719-789	FWHP	D
Bangura-6	Tullow		2004			708-780	FWHP	D
Bangura-5	Tullow		2004			579-621	FWHP	D
<b>Field : Beani Bazar</b>								
BB-1	SGFL		1981	July,1999	13480	580-620	SIWHP	Upper
BB-2	SGFL		1981	July,1999	12048	3210-3220	FWHP	Upper
<b>Field : Bibiyana</b>								
BY-1	Chevron		1998			1547-2007	FWHP	BB60, BB66
BY-2	Chevron		1998			1313-1390	FWHP	BB60, BH20A, BH20E
BY-3	Chevron		1998			1363-1403	FWHP	BB70
BY-4	Chevron		1998			1330-1390	FWHP	BH10
BY-5	Chevron		1998			1254-1299	FWHP	BH20A, BH20B, BH20C, BH20D
BY-6	Chevron		1998			1250-1486	FWHP	BB70
BY-7	Chevron		1998			1454-1566	FWHP	BH10
BY-8	Chevron		1998			1270-1297	FWHP	BH20A, BH20B
BY-9	Chevron		1998			1243-1273	FWHP	BH10
BY-10	Chevron		1998			1465-1533	FWHP	BB60
BY-11	Chevron		1998			1260-1284	FWHP	BH20A, BH20B
BY-12	Chevron		1998			1259-1332	FWHP	BB70
BY-13	Chevron		1998			1300-1356	FWHP	BH20A, BH20B
BY-14	Chevron		1998			1342-1632	FWHP	BH20A, BH20B
BY-15	Chevron		1998			2189-2240	FWHP	BB60
BY-16	Chevron		1998			1381-1644	FWHP	BH10, BH20D

## Conditions of Field and Well upto December 2018



Well	company	well type	Discovery	production start	Drilled depth (ft)	Pressure	Pressure type	Completion Zone
BY-17	<i>Chevron</i>		<i>1998</i>			<i>2104-2229</i>	<i>FWHP</i>	<i>BB60</i>
BY-18	<i>Chevron</i>		<i>1998</i>			<i>1904-2218</i>	<i>FWHP</i>	<i>BB60</i>
BY-19	<i>Chevron</i>		<i>1998</i>			<i>1354-1477</i>	<i>FWHP</i>	<i>BH10, BH20A</i>
BY-20	<i>Chevron</i>		<i>1998</i>			<i>1248-1262</i>	<i>FWHP</i>	<i>BH20D, BH20A, BH10</i>
BY-21	<i>Chevron</i>		<i>1998</i>			<i>1333-1348</i>	<i>FWHP</i>	<i>BH20A, BH20B, BH10</i>
BY-22	<i>Chevron</i>		<i>1998</i>			<i>1552-1586</i>	<i>FWHP</i>	<i>BB60</i>
BY-23	<i>Chevron</i>		<i>1998</i>			<i>1739-2021</i>	<i>FWHP</i>	<i>BH10, BH20A, BH20B, BH20C</i>
BY-24	<i>Chevron</i>		<i>1998</i>			<i>1337-2091</i>	<i>FWHP</i>	<i>BB60</i>
BY-25	<i>Chevron</i>		<i>1998</i>			<i>1728-1857</i>	<i>FWHP</i>	<i>BB60, BB66</i>
BY-26	<i>Chevron</i>		<i>1998</i>			<i>1877-2094</i>	<i>FWHP</i>	<i>BB60, BB64</i>
<b>Field : Chattak</b>								
Ch-1	SGFL		1959					
<b>Field : Fenchuganj</b>								
Fenchuganj-2	<i>BAPEX</i>		<i>1988</i>	<i>May, 2004</i>				
Fenchuganj-3	<i>BAPEX</i>		<i>1988</i>	<i>January, 2005</i>		<i>2004-2010</i>		<i>upper</i>
Fenchuganj-4	<i>BAPEX</i>		<i>1988</i>			<i>2037-2065</i>		
<b>Field : Feni</b>								
Feni-1	<i>BAPEX</i>		<i>1981</i>					
Feni-2	<i>BAPEX</i>		<i>1981</i>					
Feni-3	<i>BAPEX</i>		<i>1981</i>					
Feni-4	<i>BAPEX</i>		<i>1981</i>					
Feni-5	<i>BAPEX</i>		<i>1981</i>					
<b>Field : Habiganj</b>								
Hbj-1	<i>BGFCL</i>	<i>Vertical</i>	<i>1963</i>	<i>Feb, 1969</i>	<i>11500</i>		<i>FWHP</i>	<i>upper</i>
Hbj-2	<i>BGFCL</i>	<i>Vertical</i>	<i>1963</i>	<i>Feb, 1969</i>	<i>5100</i>		<i>FWHP</i>	<i>upper</i>
Hbj-3	<i>BGFCL</i>	<i>Vertical</i>	<i>1963</i>	<i>July, 1985</i>	<i>5282</i>	<i>1478-1486</i>	<i>FWHP</i>	<i>upper</i>
Hbj-4	<i>BGFCL</i>	<i>Vertical</i>	<i>1963</i>	<i>May, 1985</i>	<i>5249</i>	<i>1460-1467</i>	<i>FWHP</i>	<i>upper</i>
Hbj-5	<i>BGFCL</i>	<i>Directional</i>	<i>1963</i>	<i>Feb, 1992</i>	<i>11552</i>	<i>1440-1446</i>	<i>FWHP</i>	<i>upper</i>
Hbj-6	<i>BGFCL</i>	<i>Vertical</i>	<i>1963</i>	<i>Feb, 1992</i>	<i>5515</i>	<i>1375-1379</i>	<i>FWHP</i>	<i>upper</i>
Hbj-7	<i>BGFCL</i>	<i>Vertical</i>	<i>1963</i>	<i>April, 2000</i>	<i>10236</i>	<i>1331-1139</i>	<i>FWHP</i>	<i>upper</i>
Hbj-8	<i>BGFCL</i>	<i>Vertical</i>	<i>1963</i>	<i>May, 2000</i>	<i>5280</i>			<i>upper</i>
Hbj-9	<i>BGFCL</i>	<i>Vertical</i>	<i>1963</i>	<i>July, 1998</i>	<i>5249</i>			<i>upper</i>
Hbj-10	<i>BGFCL</i>	<i>Vertical</i>	<i>1963</i>	<i>Apr, 2000</i>	<i>5133</i>	<i>1322-1331</i>	<i>FWHP</i>	<i>upper</i>
Hbj-11	<i>BGFCL</i>	<i>Vertical</i>	<i>1963</i>	<i>january, 2008</i>	<i>10499</i>	<i>1417-1423</i>	<i>FWHP</i>	<i>upper</i>
<b>Field : Jalalabad</b>								
JB-1	<i>Chevron</i>		<i>1989</i>			<i>1333-1436</i>	<i>FWHP</i>	<i>BB60, BB50</i>



## Conditions of Field and Well upto December 2018



Well	company	well type	Discovery	production start	Drilled depth (ft)	Pressure	Pressure type	Completion Zone
JB-2	<i>Chevron</i>		<i>1989</i>			<i>1279-1294</i>	<i>FWHP</i>	<i>BB50, BB60</i>
JB-3	<i>Chevron</i>		<i>1989</i>			<i>1332-1375</i>	<i>FWHP</i>	<i>BB50, BB60</i>
JB-4	<i>Chevron</i>		<i>1989</i>			<i>1365-1425</i>	<i>FWHP</i>	<i>BB60</i>
JB-6	<i>Chevron</i>		<i>1989</i>			<i>1354-1362</i>	<i>FWHP</i>	<i>BB60, BB50</i>
JB-7	<i>Chevron</i>		<i>1989</i>			<i>1666-1679</i>	<i>FWHP</i>	<i>BB20</i>
JB-8	<i>Chevron</i>		<i>1989</i>			<i>1362-1370</i>	<i>FWHP</i>	<i>BB50, BB60</i>
<b>Field : Kailas Tila</b>								
KTL-1	<i>SGFL</i>		<i>1962</i>	<i>June, 1983</i>	<i>12417</i>	<i>0</i>	<i>SIWHP</i>	
KTL-2	<i>SGFL</i>		<i>1962</i>	<i>Feb, 1995</i>		<i>2225-2230</i>	<i>FWHP</i>	
KTL-3	<i>SGFL</i>		<i>1962</i>	<i>March, 1995</i>		<i>2470-2495</i>	<i>FWHP</i>	
KTL-4	<i>SGFL</i>		<i>1962</i>	<i>March, 1997</i>		<i>2360-2410</i>	<i>FWHP</i>	
KTL-5	<i>SGFL</i>		<i>1962</i>	<i>Sep, 2006</i>		<i>0</i>	<i>SIWHP</i>	
KTL-6	<i>SGFL</i>		<i>1962</i>	<i>Aug, 2007</i>		<i>2490-2495</i>	<i>FWHP</i>	
KTL-7	<i>SGFL</i>		<i>1962</i>			<i>0</i>	<i>SIWHP</i>	
<b>Field : Kamta</b>								
Kamta-1	<i>BGFCL</i>	<i>Vertical</i>	<i>1981</i>	<i>july,1982</i>	<i>11857</i>			<i>N/A</i>
<b>Field : Meghna</b>								
M-1	<i>BGFCL</i>	<i>Vertical</i>	<i>2004</i>	<i>july,1990</i>	<i>10069</i>	<i>1400-1450</i>	<i>FWHP</i>	<i>A,E,F &amp; G</i>
<b>Field : Moulavi Bazar</b>								
MV Bazar-2	<i>Chevron</i>		<i>1997</i>			<i>800-820</i>	<i>FWHP</i>	<i>BB70</i>
MV Bazar-3	<i>Chevron</i>		<i>1997</i>			<i>800-820</i>	<i>FWHP</i>	<i>BB70</i>
MV Bazar-4	<i>Chevron</i>		<i>1997</i>			<i>946-952</i>	<i>FWHP</i>	<i>BB20</i>
MV Bazar-5	<i>Chevron</i>		<i>1997</i>			<i>0</i>	<i>SIWHP</i>	<i>BB60</i>
MV Bazar-6	<i>Chevron</i>		<i>1997</i>			<i>822-890</i>	<i>FWHP</i>	<i>BB20</i>
MV Bazar-7	<i>Chevron</i>		<i>1997</i>			<i>844-901</i>	<i>FWHP/SIWHP</i>	<i>BB20</i>
MV Bazar-9	<i>Chevron</i>		<i>1997</i>			<i>0</i>	<i>SIWHP</i>	<i>BB46, BB48, BB60</i>
<b>Field : Narshingdi</b>								
N-1	<i>BGFCL</i>	<i>vertical</i>	<i>1990</i>	<i>october,1990</i>	<i>11320</i>	<i>1143-1197</i>	<i>FWHP</i>	<i>BL</i>
N-2	<i>BGFCL</i>	<i>vertical</i>	<i>1990</i>	<i>february,2007</i>	<i>10778</i>	<i>1015-1097</i>	<i>FWHP</i>	<i>BL</i>
<b>Field : Rashidpur</b>								
RP-1	<i>SGFL</i>		<i>1960</i>			<i>1290-1291</i>	<i>FWHP</i>	<i>Upper</i>
RP-2	<i>SGFL</i>		<i>1960</i>			<i>73</i>	<i>SIWHP</i>	<i>Lower</i>
RP-3	<i>SGFL</i>		<i>1960</i>			<i>1548-1568</i>	<i>FWHP</i>	<i>Lower</i>
RP-4	<i>SGFL</i>		<i>1960</i>			<i>1450-1655</i>	<i>FWHP</i>	<i>Lower</i>
RP-5	<i>SGFL</i>		<i>1960</i>			<i>2291</i>	<i>SIWHP</i>	<i>Lower</i>
RP-6	<i>SGFL</i>		<i>1960</i>			<i>870</i>	<i>SIWHP</i>	<i>A</i>

## Conditions of Field and Well upto December 2018



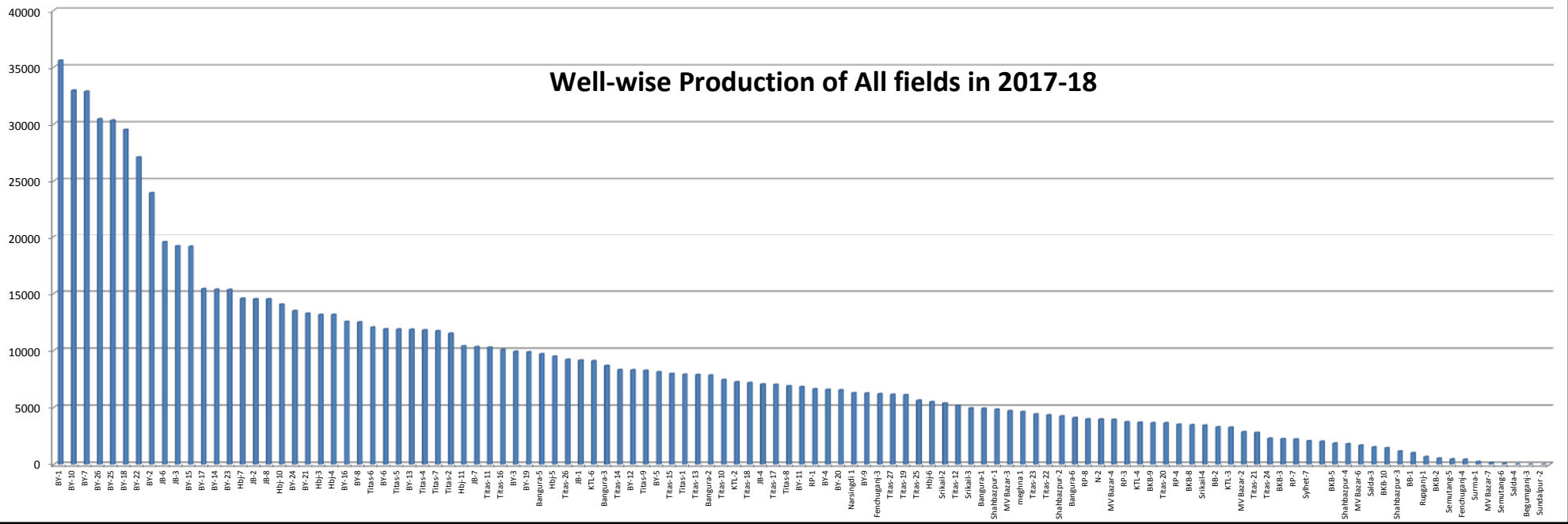
Well	company	well type	Discovery	production start	Drilled depth (ft)	Pressure	Pressure type	Completion Zone
RP-7	SGFL		1960			1308-1338	FWHP	Lower
RP-8	SGFL		1960			1600-1625	FWHP	Upper
<b>Field : Salda Nadi</b>								
Salda-1	BAPEX		1995					
Salda-2	BAPEX		1995					
Salda-3	BAPEX	Directional	1995	January, 2012		639-640, 698-700		Upper/Lower
Salda-4	BAPEX		1995					
<b>Field : Sangu</b>								
Sangu-1	BGFCL		1996					
Sangu-3z	BGFCL		1996					
Sangu-4	BGFCL		1996					
Sangu-5	BGFCL		1996					
Sangu-7	BGFCL		1996					
Sangu-8	BGFCL		1996					
Sangu-9	BGFCL		1996					
Sangu-10	BGFCL		1996					
Sangu-11	BGFCL		1996					
<b>Field : Semutang</b>								
Semutang-5	BAPEX		1967			280-508		Lower Zone
Semutang-6	BAPEX		1967			750-1302		
<b>Field : Shahbazpur</b>								
Shahbazpur-1	BAPEX		1995	May, 2009		2310-3543		Lower Zone
Shahbazpur-2	BAPEX		1995			3541-4133		Lower Zone
Shahbazpur-3	BAPEX		1995			4300		Upper Zone
Shahbazpur-4	BAPEX		1995			4250		Upper Zone
<b>Field : Srikail</b>								
Srikail-2	BAPEX		2012			990-1016		Upper & Lower D
Srikail-3	BAPEX		2012			981-1043		Upper & Lower D
Srikail-4	BAPEX		2012			1018-1068		Upper & Lower D
<b>Field : Sundalpur</b>								
Sundalpur -1	BAPEX		2011					
Sundalpur -2	BAPEX		2011					
<b>Field : Sylhet</b>								
Sylhet-3	SGFL		1955	Aug, 1958				
Sylhet-6	SGFL		1955	Aug, 1964		800-850	SIWHP	
Sylhet-7	SGFL		1955	Apr, 2005		1750-1820	FWHP	Lower Bokabil

## Conditions of Field and Well upto December 2018

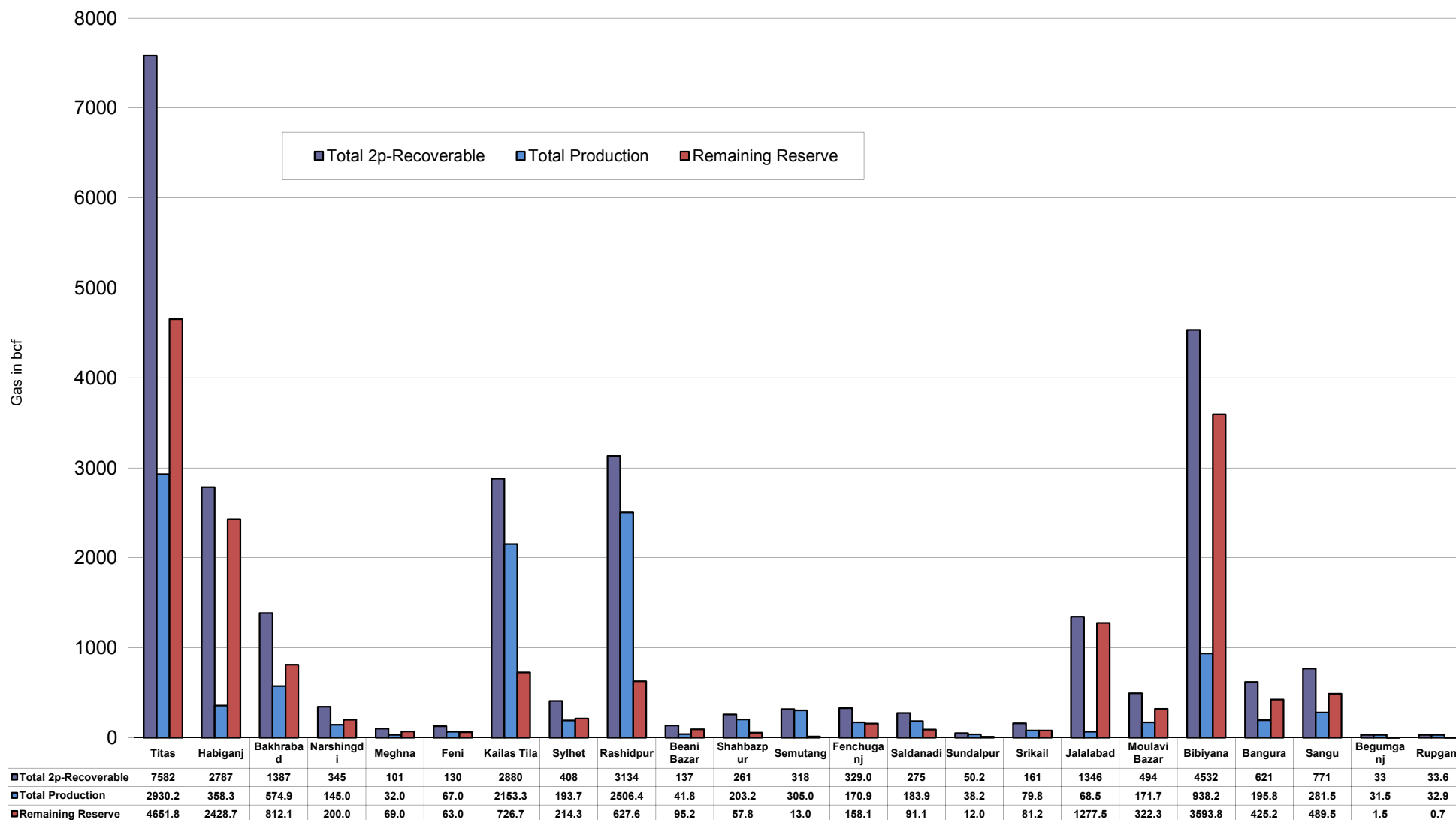


Well	company	well type	Discovery	production start	Drilled depth (ft)	Pressure	Pressure type	Completion Zone
Surma-1	SGFL		1955	June, 2010		230	SIWHP	C & D
<b>Field : Titas</b>								
Titas-1	BGFCL	vertical	1962	Mar,1969	12325	900-925	FWHP	A
Titas-2	BGFCL	vertical	1962	Fen,1969	10574	960-1020	FWHP	A
Titas-3	BGFCL	vertical	1962	sept,1969	9315	0	FWHP	A
Titas-4	BGFCL	vertical	1962	oct,1969	9350	1020-1070	FWHP	A
Titas-5	BGFCL	Directional	1962	jan,1981	10805	990-1035	FWHP	A
Titas-6	BGFCL	vertical	1962	Feb,1984	10072	1195-1225	FWHP	A
Titas-7	BGFCL	Directional	1962	July,1985	11006	1090-1160	FWHP	A
Titas-8	BGFCL	Directional	1962	sept,1985	11760	1000-1030	FWHP	B & C
Titas-9	BGFCL	Directional	1962	jan,1988	11893	1040-1085	FWHP	B & C
Titas-10	BGFCL	Directional	1962	may,1988	12139	1140-1180	FWHP	A
Titas-11	BGFCL	vertical	1962	Jun,1991	10462	1275-1310	FWHP	A
Titas-12	BGFCL	Directional	1962	July,2002	9873	1465-1500	FWHP	A
Titas-13	BGFCL	Directional	1962	June,2000	11487	1085-1115	FWHP	A
Titas-14	BGFCL	Directional	1962	June,2000	11004	1200-1250	FWHP	A
Titas-15	BGFCL	vertical	1962	may,2006	10446	0	FWHP	A
Titas-16	BGFCL	Directional	1962	dec,2005	11673	1205-1225	FWHP	A
Titas-17	BGFCL	vertical	1962	feb,2013	9424	1145-1175	FWHP	A
Titas-18	BGFCL	Directional	1962	august,2013	10932	1165-1190	FWHP	A
Titas-19	BGFCL	Directional	1962	may,2014	12730	1365-1415	FWHP	A
Titas-20	BGFCL	Directional	1962	oct,2013	11585	1370-1440	FWHP	A
Titas-21	BGFCL	Directional	1962	dec,2013	11631	1260-1285	FWHP	A
Titas-22	BGFCL	Directional	1962	march,2014	11926	990-1025	FWHP	A
Titas-27	BGFCL	Directional	1962	april,2014	10292	1245-1265	FWHP	A
Titas-23	BGFCL	Directional	1962	feb,2017	11988	2265-2340	FWHP	C
Titas-24	BGFCL	Directional	1962	oct,2016	12686	1120-1245	FWHP	C
Titas-25	BGFCL	vertical	1962	march,2016	11680	1300-1340	FWHP	A
Titas-26	BGFCL	Directional	1962	july,2016	12618	1840-1875	FWHP	C
<b>Field : Begumganj</b>								
Begumganj-3	BAPEX		1977					
<b>Field : Rupganj</b>								
Rupganj-1	BAPEX		2014			38-88		

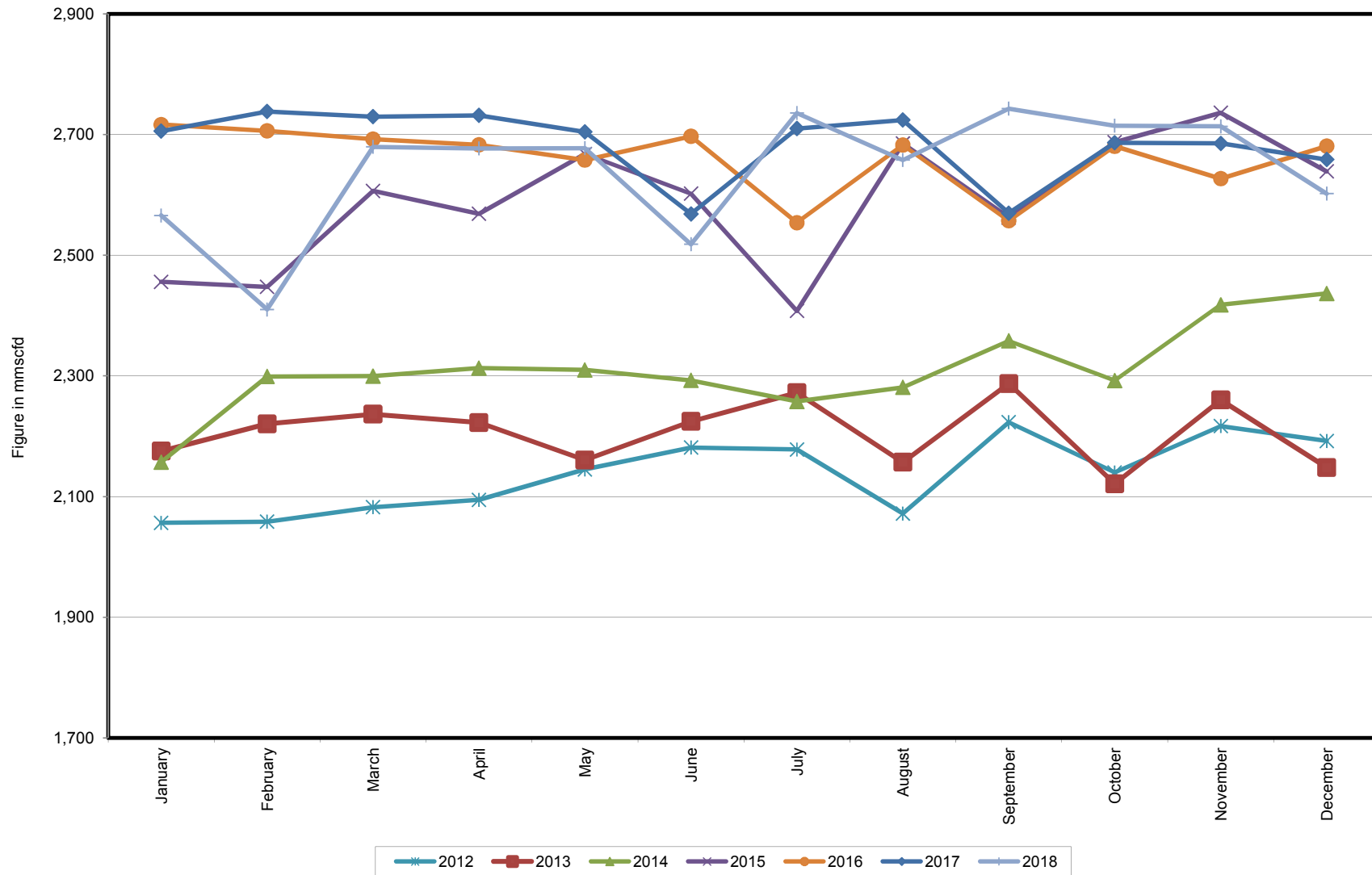
### Well-wise Production of All fields in 2017-18



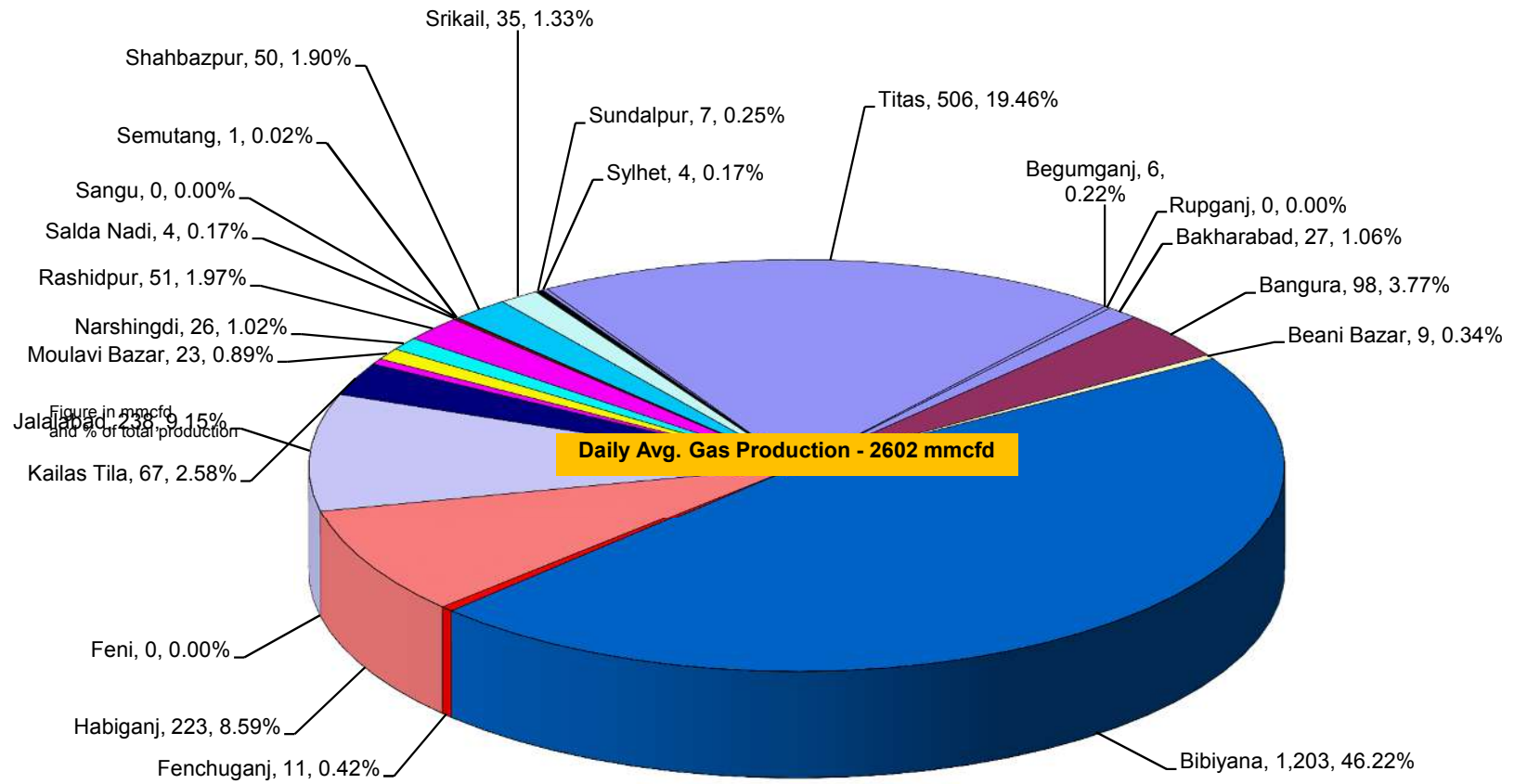
## Reserve, Production and Remaining Reserve as of December 2018



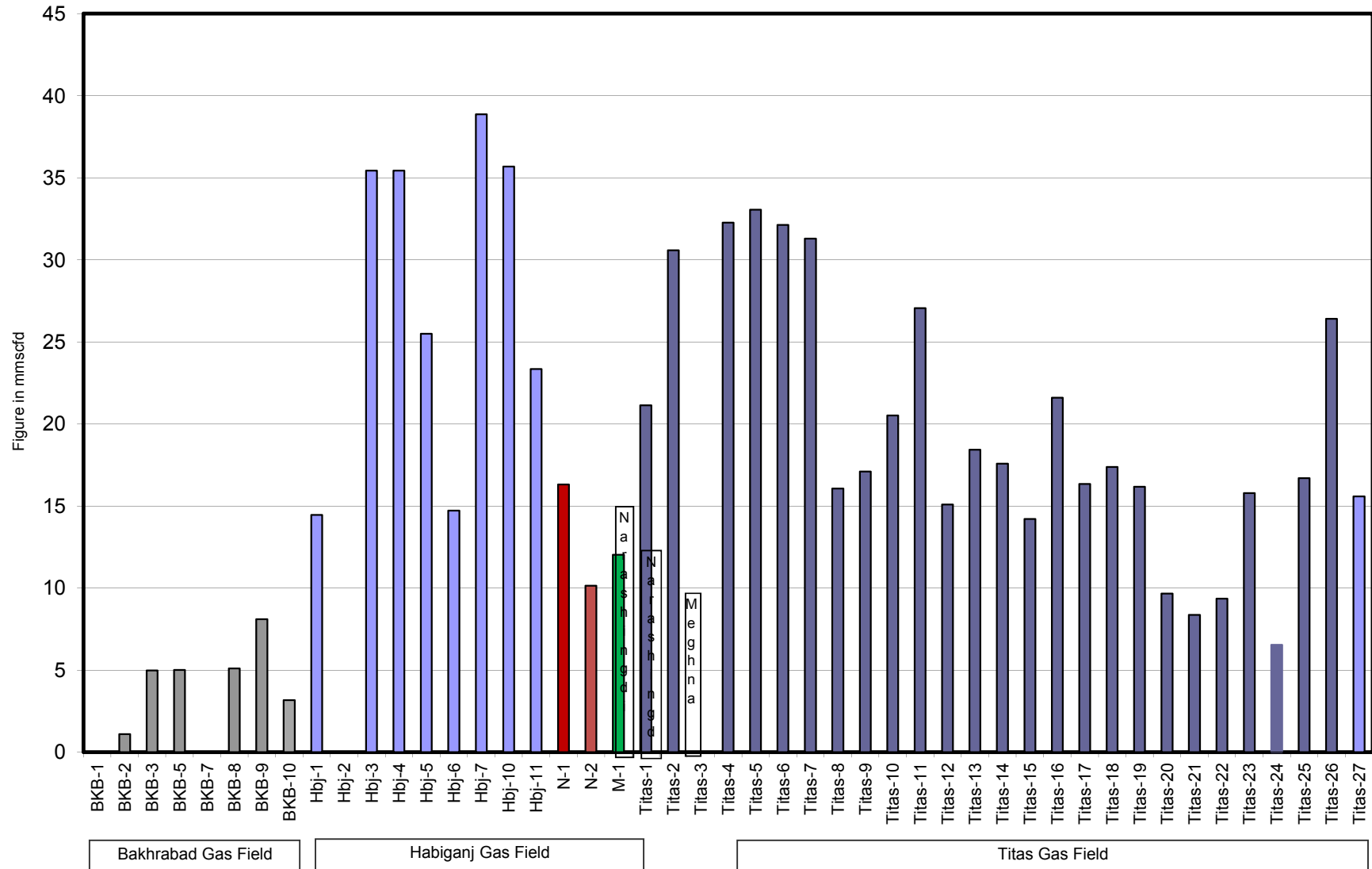
## Daily Avg. Production From January 2012 to December 2018



## Field Wise Daily Avg. Production December 2018



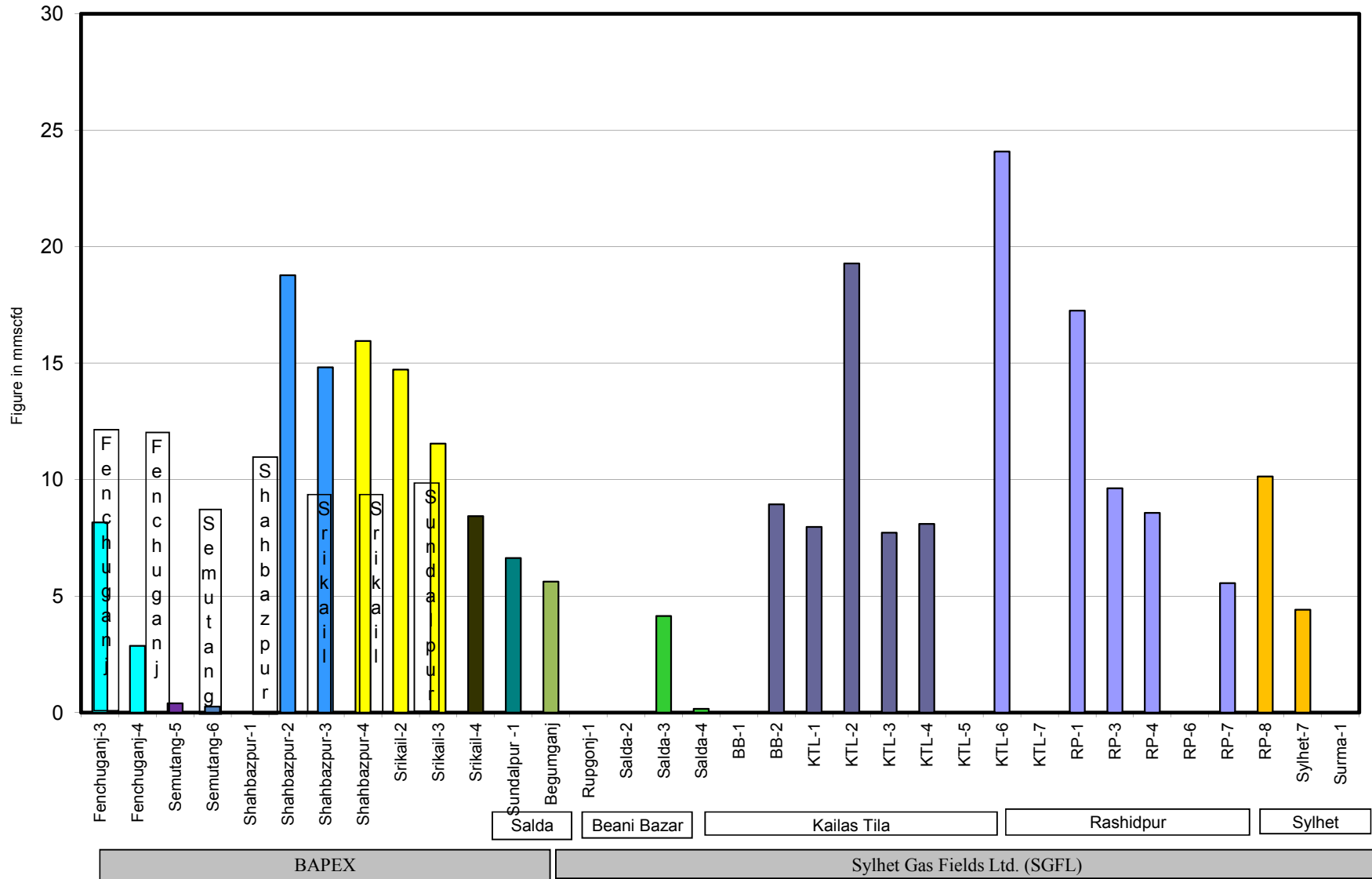
## Wellwise Daily Avg. Production- BGFCL December 2018



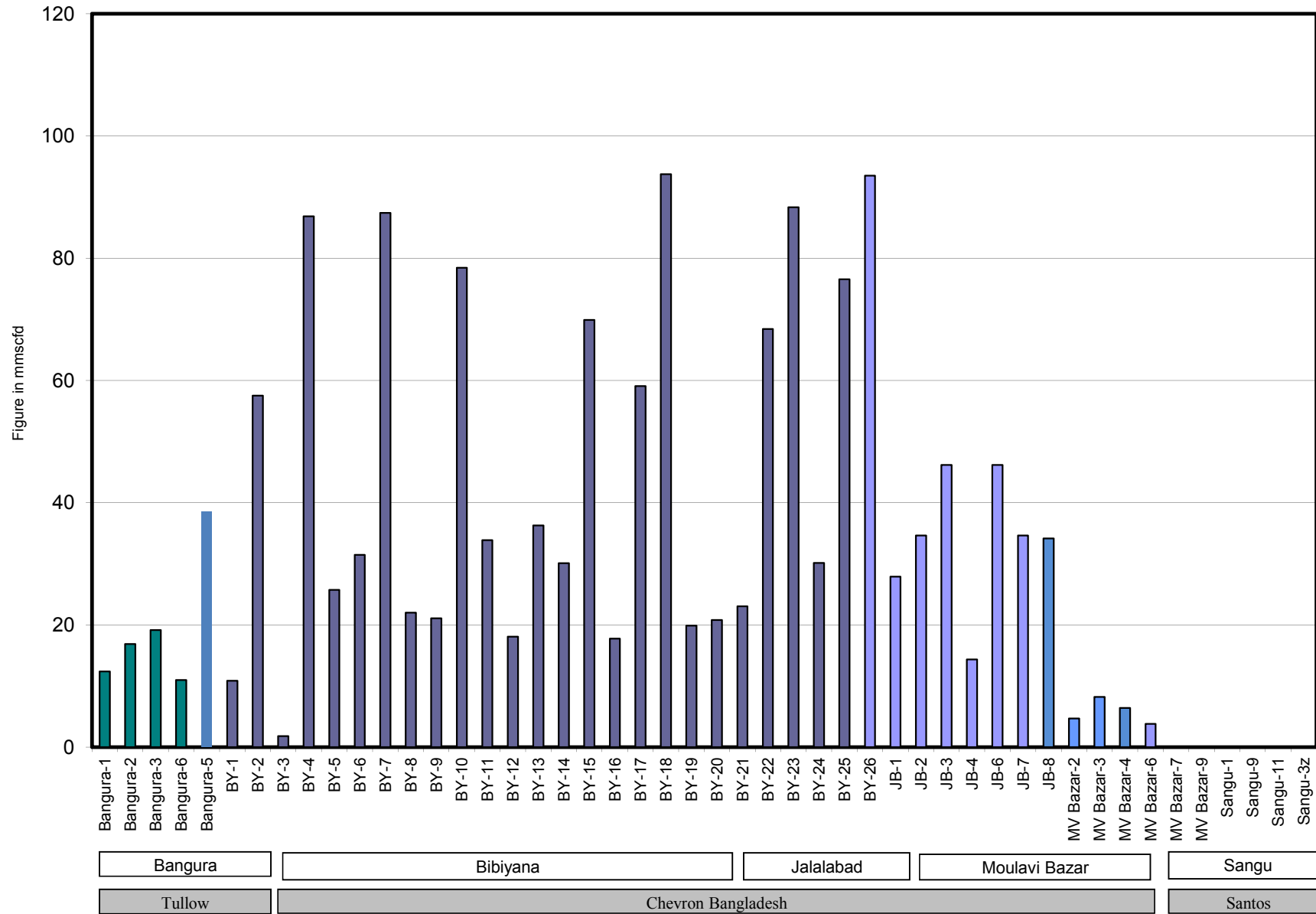
Bangladesh Gas Fields Co. Ltd. (BGFL)



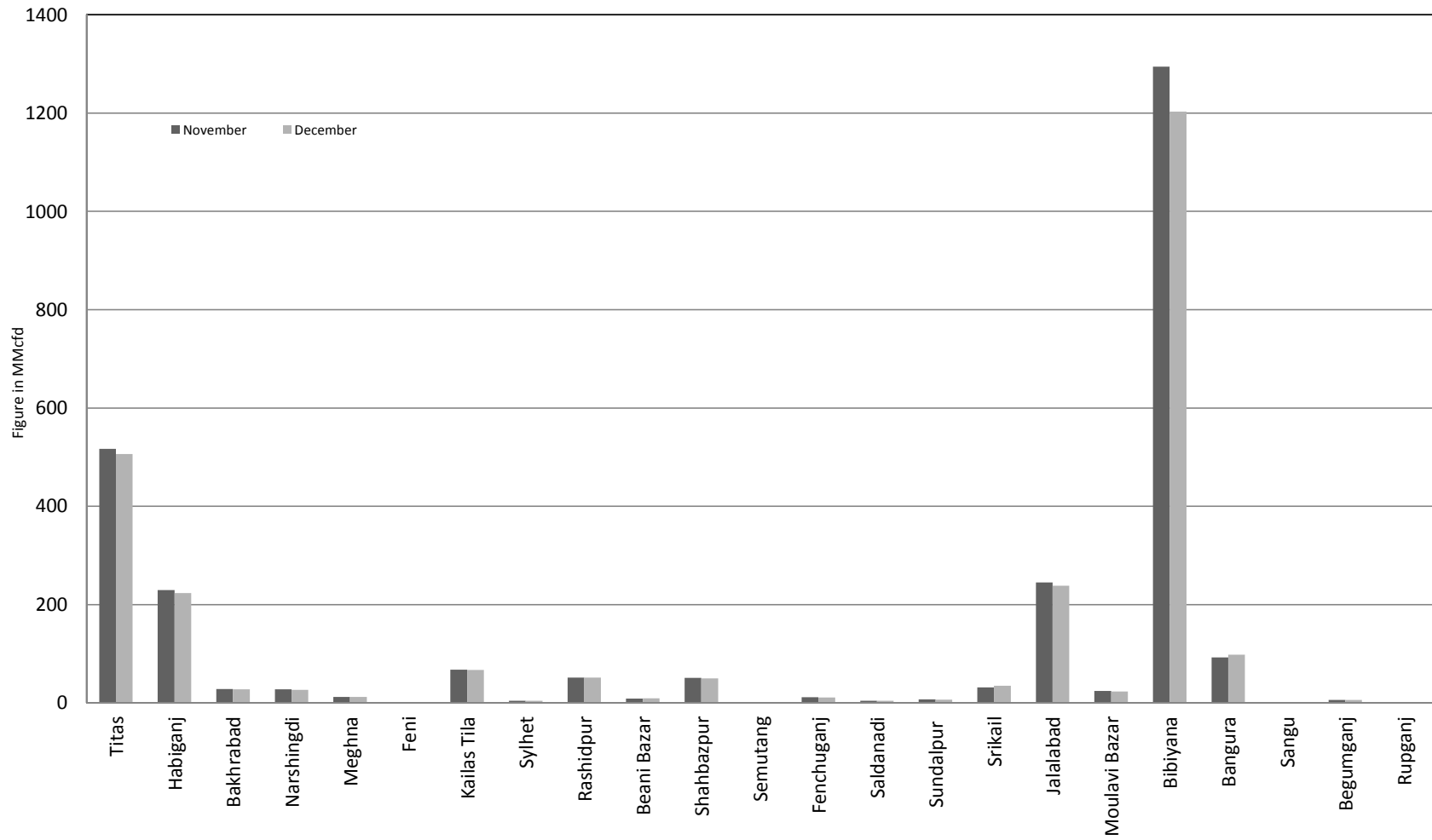
## Wellwise Daily Avg. Production- Bapex and SGFL December 2018



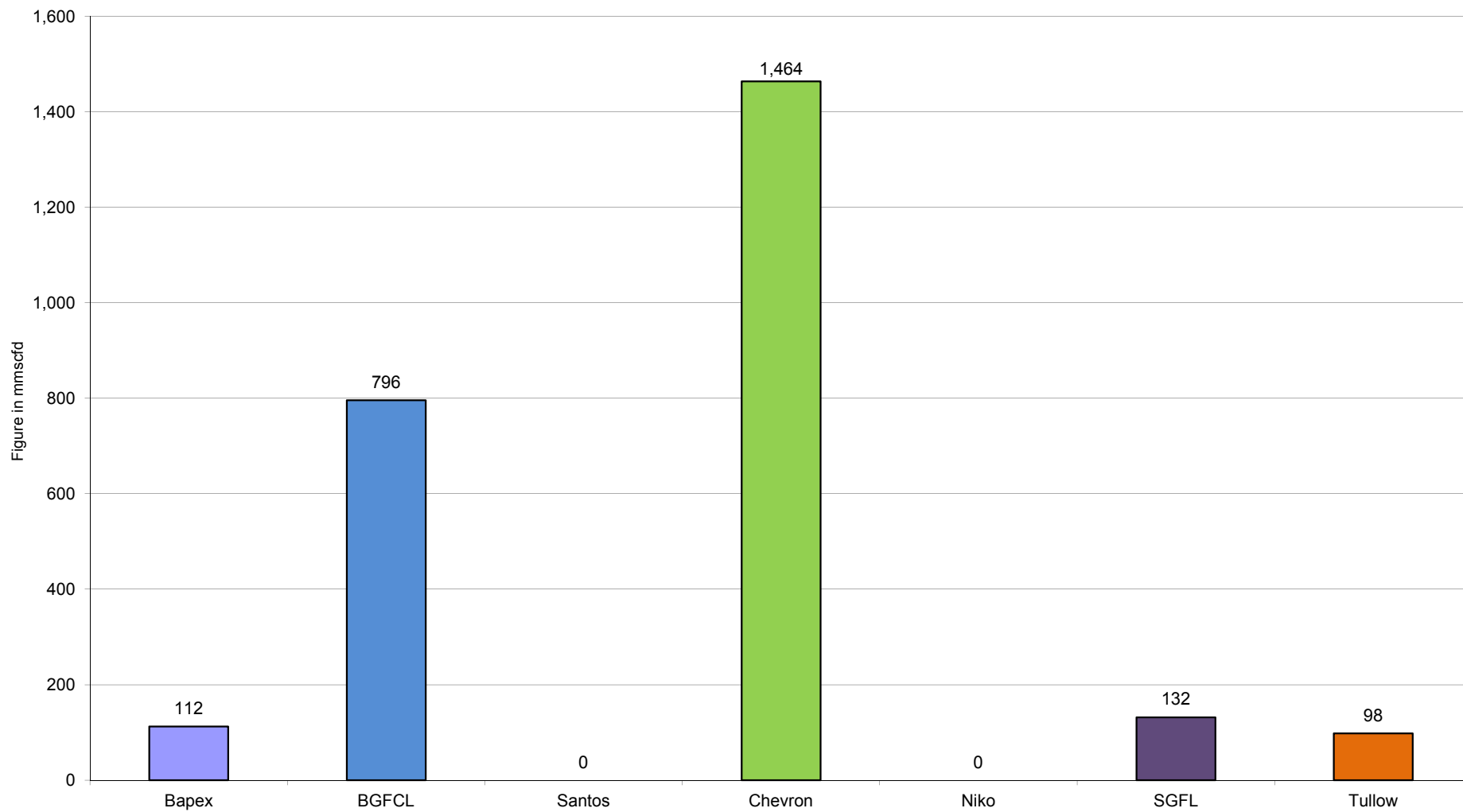
## Wellwise Daily Avg. Production- IOC and JVA December 2018



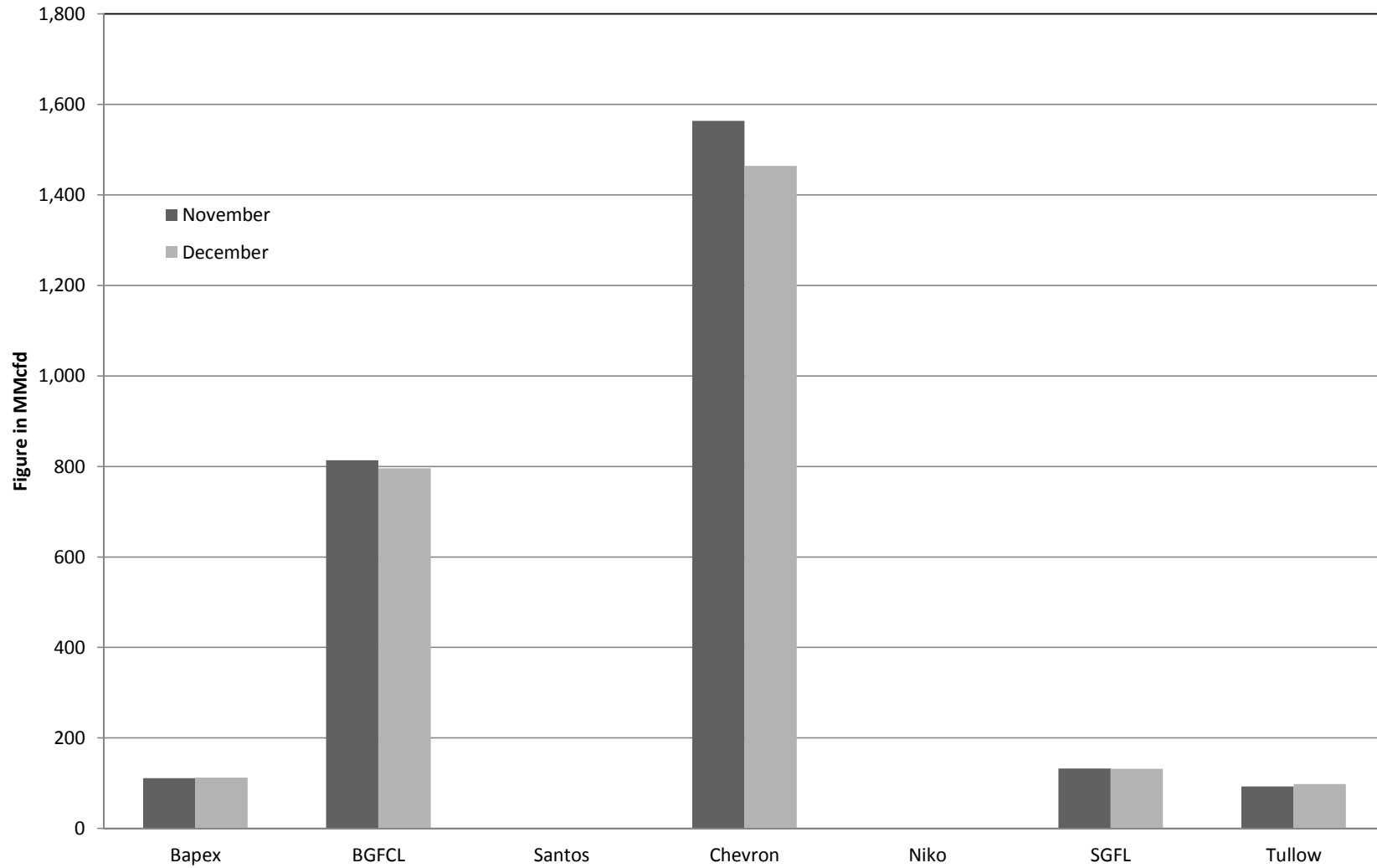
## Comparison of fieldwise daily avg. Gas production between November 2018 & December 2018



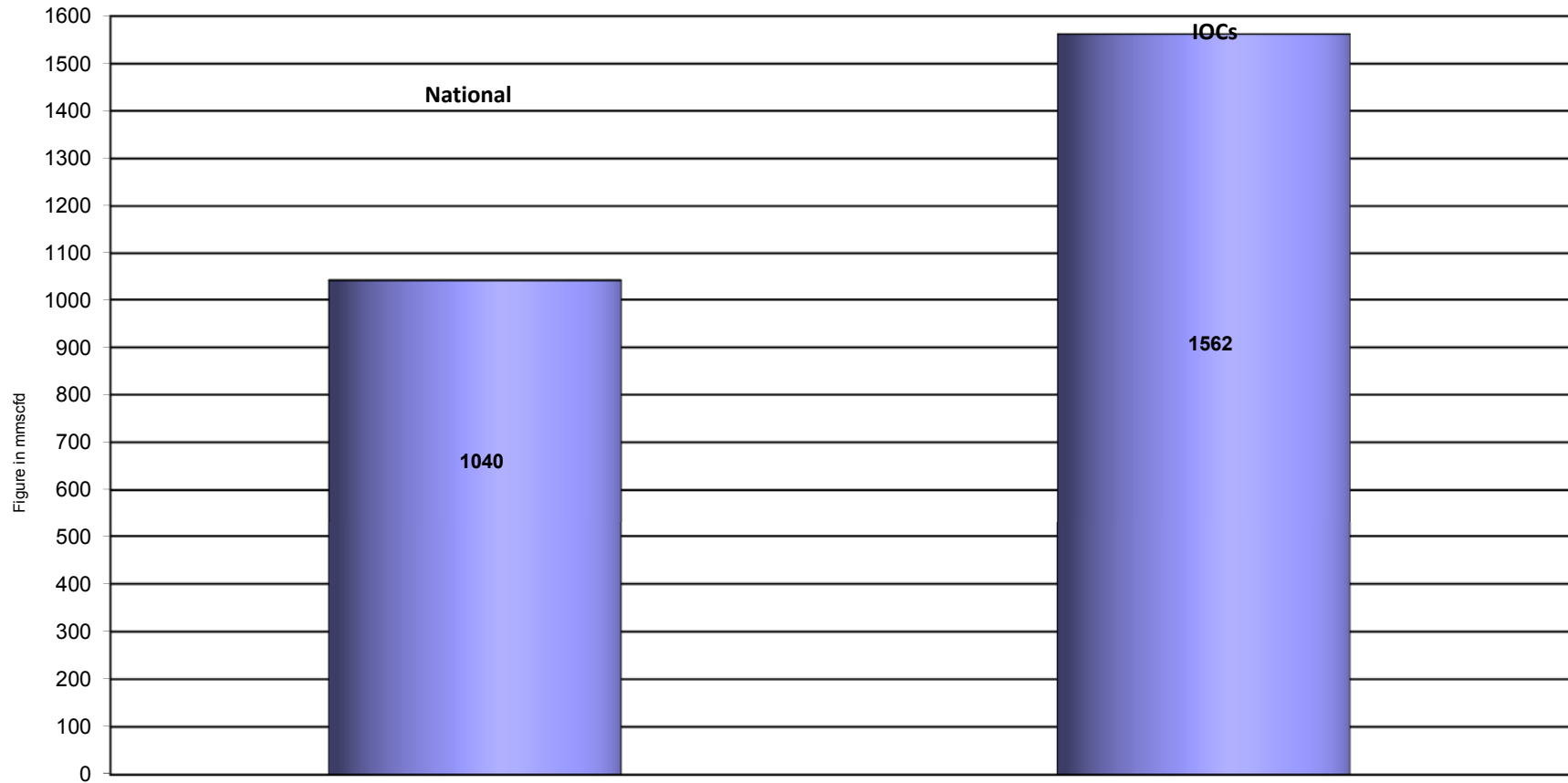
### Daily Avg. Production by Operators December 2018



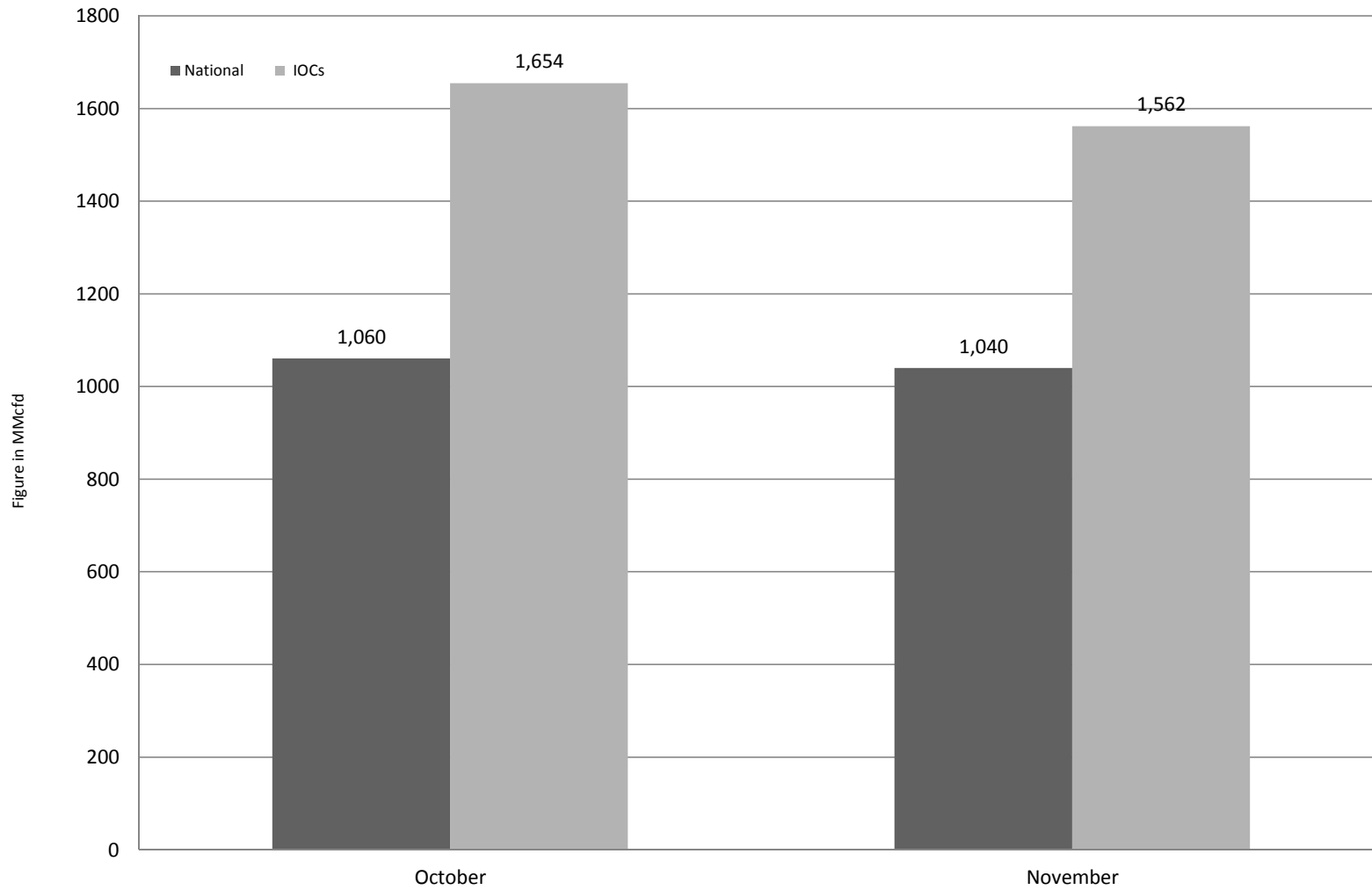
### Comparison of operatorwise daily avg. Gas production between November 2018 & December 2018



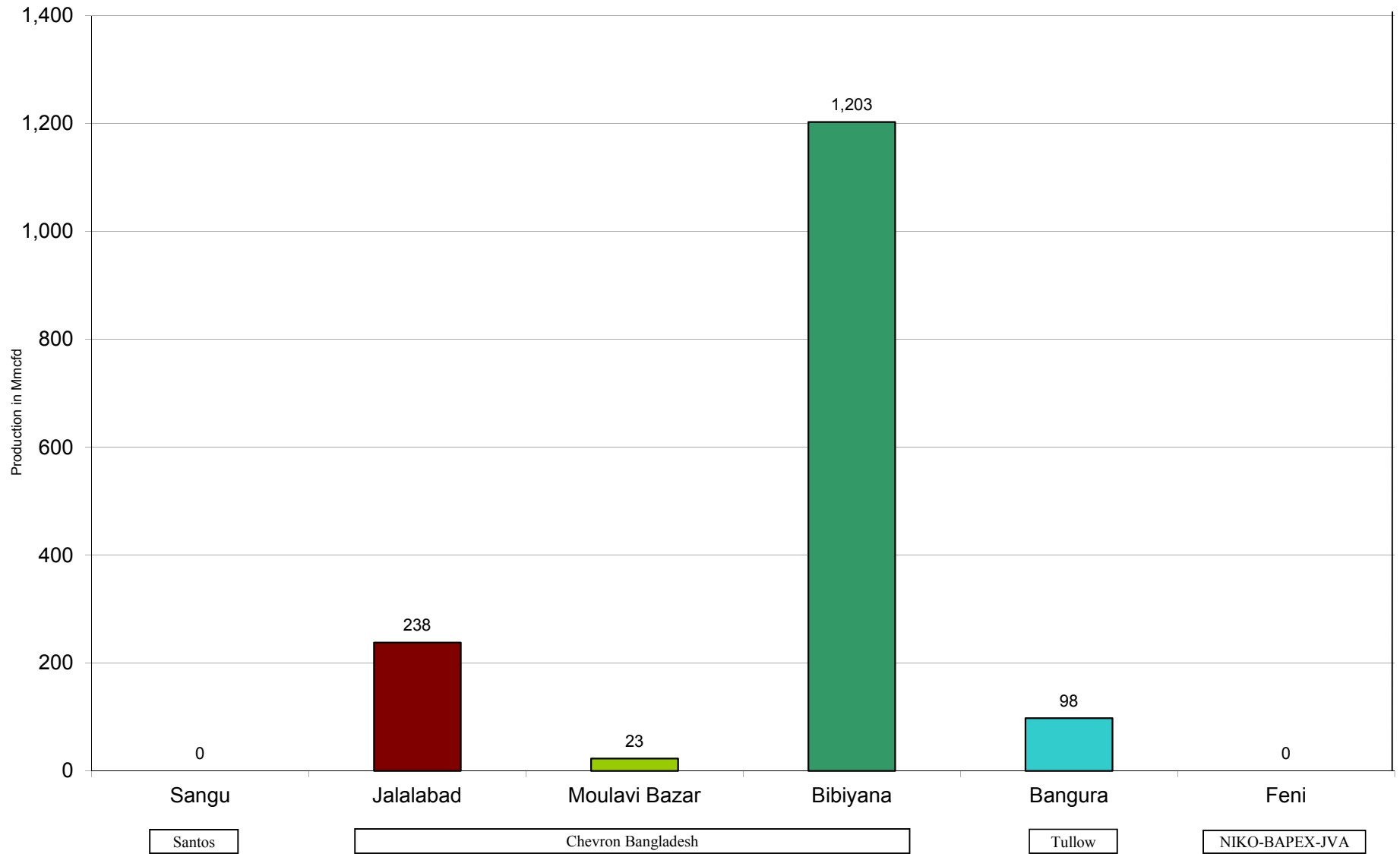
## Daily Avg. Production - National Vs. IOCs December 2018



### Comparison of daily avg. Gas production - National vs IOC's between November 2018 & December 2018

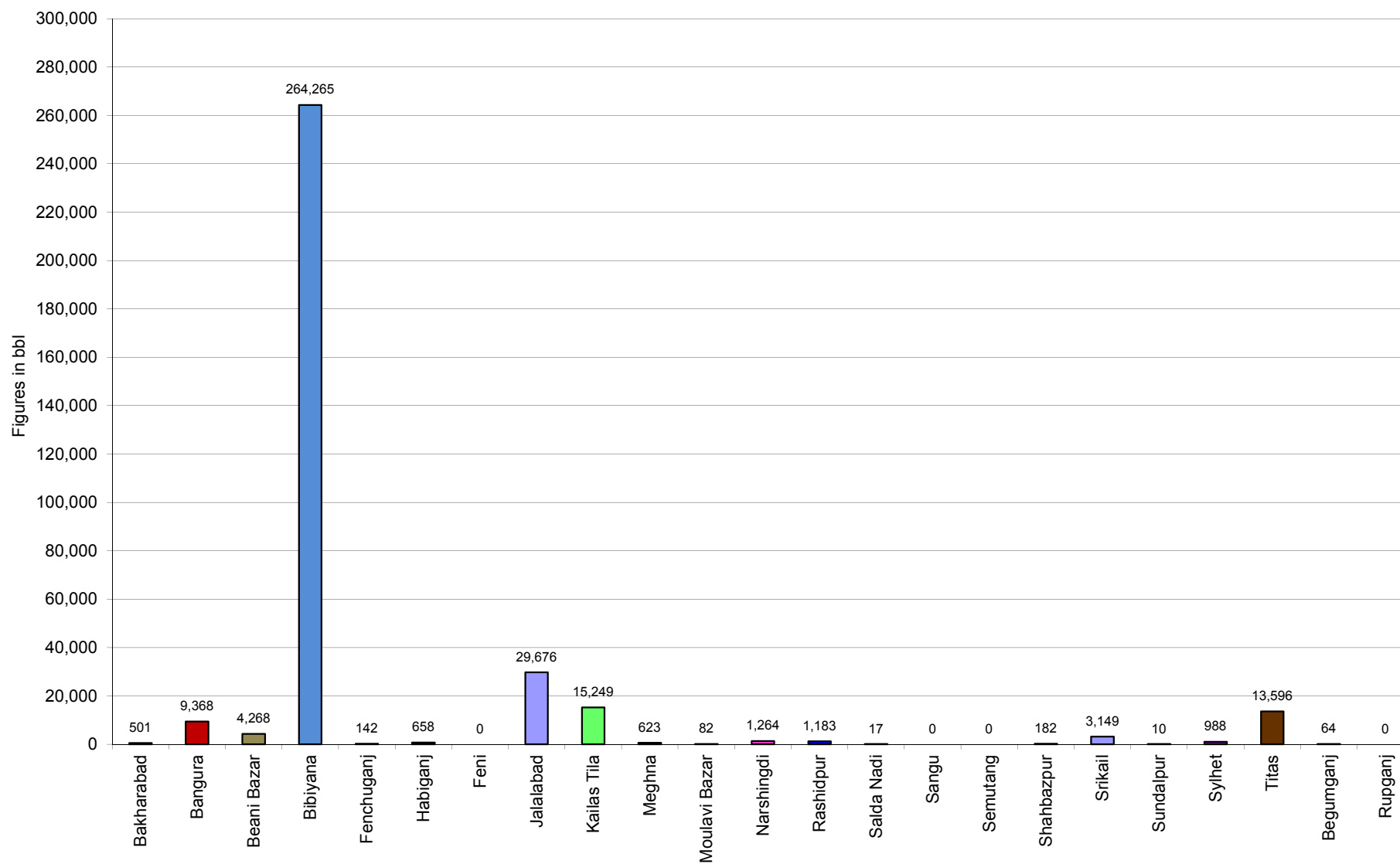


## Daily Avg. Production - IOC and JVA December 2018





## Monthly Condensate Production December 2018



## Field wise Coal Reserve in Bangladesh

SI No.	Coal Basins	Proved (Mt)	Indicated (Mt)	Inferred (Mt)	Total (Mt)
1	Barapukuria	114.32	211.33	21.06+(43-64)*	346.71+(43-64)*
2	Phulbari	288	226	58	572
3	Khalashpir	-	297.57	225.92	523.49
4	Jamalganj	-	-	1053.9	1053.9
5	Dighipara	-	105	495	600
	<b>Total</b>	<b>402.32</b>	<b>839.9</b>	<b>1896.88-1917.88</b>	<b>3139.10-3160.10</b>

*\*Resources of VI Seam in second syncline are towards SW of main basin, after Wardell Armstrong*

*NOTE: Reserve Figure based on Coal Sector Development Strategy (Final), HCU, PwC*

## Summary of Reserve and Production of Barapukuria Coal Mine As of 31 December 2018

<b>Coal Initially Place (Proven + Probable)</b>	<b>346.71 Mt</b>	<b>0.347 Bt</b>
<b>Total Reserve of Seam VI</b>	<b>285.41 Mt</b>	<b>0.285 Bt</b>
<b>Recoverable from Seam VI Central part(Proven + Probable)</b>	<b>16.54 Mt*</b>	<b>0.017 Bt</b>
<b>Coal Production in December 2018</b>	<b>0.09 Mt</b>	<b>0.000 Bt</b>
<b>Cumulative Production as of December 2018</b>	<b>10.31 Mt</b>	<b>0.010 Bt</b>
<b>Remaining Reserve</b>	<b>6.23 Mt</b>	<b>0.006 Bt</b>

*NOTE: Reserve figure based on Mines and Minerals Development Report ,HCU PwC*

\*Figure from BCMCL, M/S Wardell Armstrong. According to Mines and Minerals Development Report ,HCU, PwC this figure is 64.8 Mt

## Barapukuria Coal Mine-MPM and P Contract (BCMCL)

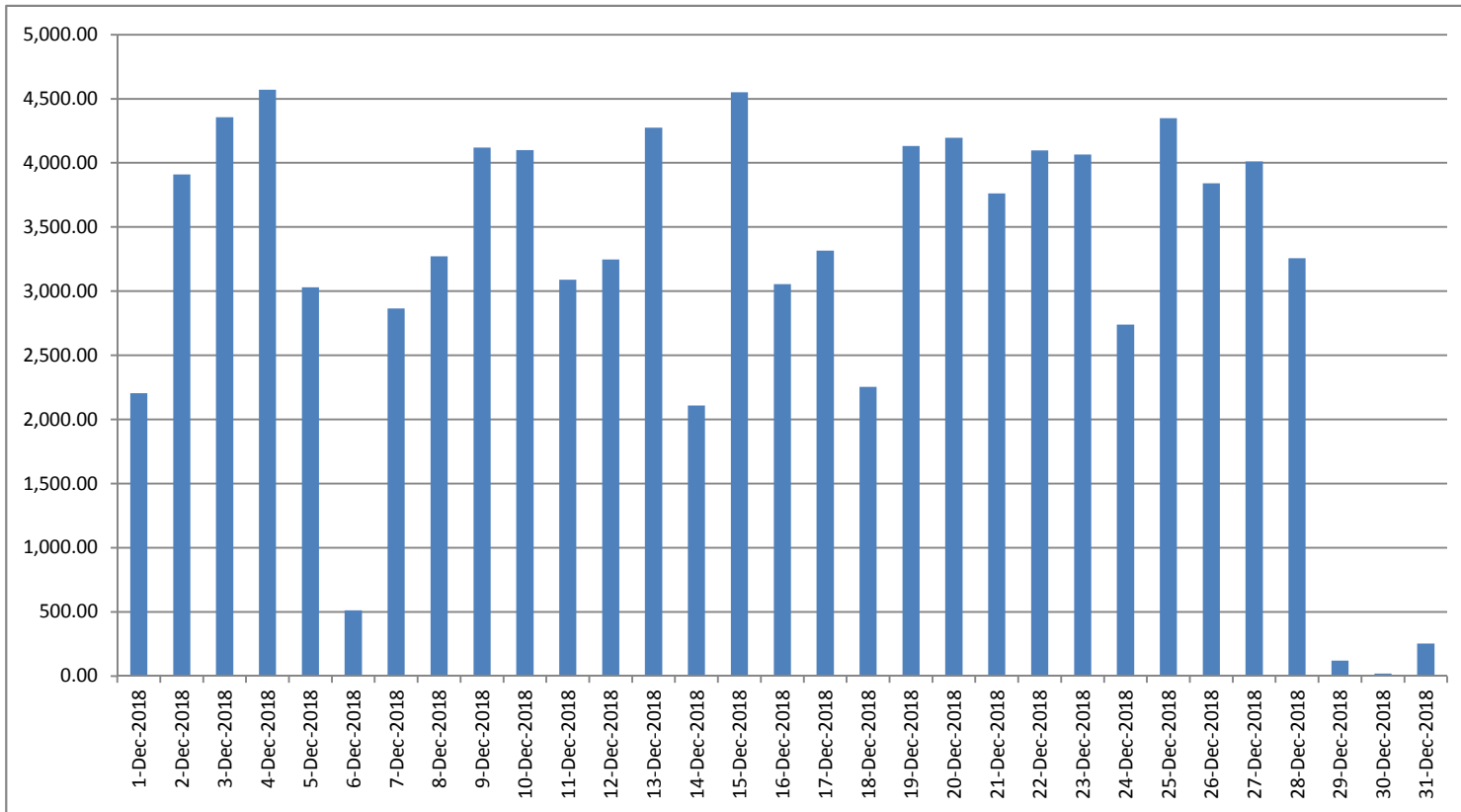
### Measurement Record: Surface Belt Weigher

Measurement Period: December 2018

Day wise data	Consortium Daily Output (ton)	Consortium Cumulative Total	BCMCL Daily Output	BCMCL Cumulative Total	Remarks
1-Dec-2018	2,205.75	2,205.75	2,205.75	2,205.75	
2-Dec-2018	3,909.00	6,114.75	3,909.00	6,114.75	
3-Dec-2018	4,355.00	10,469.75	4,355.00	10,469.75	
4-Dec-2018	4,571.50	15,041.25	4,571.50	15,041.25	
5-Dec-2018	3,031.00	18,072.25	3,031.00	18,072.25	
6-Dec-2018	510.75	18,583.00	510.75	18,583.00	
7-Dec-2018	2,865.75	21,448.75	2,865.75	21,448.75	
8-Dec-2018	3,271.75	24,720.50	3,271.75	24,720.50	
9-Dec-2018	4,118.75	28,839.25	4,118.75	28,839.25	
10-Dec-2018	4,100.50	32,939.75	4,100.50	32,939.75	
11-Dec-2018	3,090.00	36,029.75	3,090.00	36,029.75	
12-Dec-2018	3,247.50	39,277.25	3,247.50	39,277.25	
13-Dec-2018	4,274.50	43,551.75	4,274.50	43,551.75	
14-Dec-2018	2,108.00	45,659.75	2,108.00	45,659.75	
15-Dec-2018	4,550.00	50,209.75	4,550.00	50,209.75	
16-Dec-2018	3,055.00	53,264.75	3,055.00	53,264.75	
17-Dec-2018	3,316.25	56,581.00	3,316.25	56,581.00	
18-Dec-2018	2,254.75	58,835.75	2,254.75	58,835.75	
19-Dec-2018	4,130.75	62,966.50	4,130.75	62,966.50	
20-Dec-2018	4,195.50	67,162.00	4,195.50	67,162.00	
21-Dec-2018	3,762.25	70,924.25	3,762.25	70,924.25	
22-Dec-2018	4,098.25	75,022.50	4,098.25	75,022.50	
23-Dec-2018	4,065.50	79,088.00	4,065.50	79,088.00	
24-Dec-2018	2,738.50	81,826.50	2,738.50	81,826.50	
25-Dec-2018	4,348.50	86,175.00	4,348.50	86,175.00	
26-Dec-2018	3,840.25	90,015.25	3,840.25	90,015.25	
27-Dec-2018	4,010.00	94,025.25	4,010.00	94,025.25	
28-Dec-2018	3,258.00	97,283.25	3,258.00	97,283.25	
29-Dec-2018	119.00	97,402.25	119.00	97,402.25	
30-Dec-2018	18.00	97,420.25	18.00	97,420.25	
31-Dec-2018	252.00	97,672.25	252.00	97,672.25	

less Difference in Water Content:	5319.51
Less Out of Seam dilution:	0
<b>Output (tons) measured by Belt</b>	<b>92,352.74</b>
Tonnes mined in DARR	0
Net Output after removing DARR	92,352.74

## Barapukuria Coal Mine Daywise Data Graph for December 2018



আসুন, যানবাহনসমূহকে অটোগ্যাসে রূপান্তর করি...

জাতীয় সম্পদ প্রাকৃতিক গ্যাস সাশ্রয় করি...

facebook

"Energy misused, cannot be excused"

আমাদের ঘরে যদি এখনো কয়েল স্টার্টার যুক্ত টিউবলাইট থেকে থাকে, আসুন আজই LED টিউবলাইট দ্বারা প্রতিস্থাপন করি।

HYDROCARBON UNIT ON FACEBOOK

“আসুন আমাদের জাতীয় সম্পদ প্রাকৃতিক গ্যাস সাশ্রয় করি”

১। **LPG** ব্যবহার করুন..

অবৈধ গ্যাস সংযোগ থেকে বিরত থাকুন

২। **CNG** নয়, অকটেন দিয়ে গাড়ি চালান...

গাড়ির ইঞ্জিনের আয়ুষ্কাল বাড়ান

চলুন আজই যানবাহনসমূহ AUTO GAS (LPG) এ রূপান্তর করি...

- \* CNG এর তুলনায় LPG কনভারশনে ৫০% কম খরচ হয়
- \* ৩-৫ মিনিটে ট্যাংকে ফুয়েল ভর্তি হয়, লম্বা লাইনে দাঁড়িয়ে অপেক্ষা করার প্রয়োজন পরে না
- \* CNG এর তুলনায় সিলিন্ডারে জায়গা, ওজন ও প্রেশার কম দরকার
- \* রক্ষণাবেক্ষণের খরচ কম
- \* পেট্রলের তুলনায় AUTO GAS -এ খরচ প্রায় ৫০% কম
- \* গ্যাসোলিন ও ডিজেলের তুলনায় নিঃসরণ কম

# Hydrocarbon Unit

Energy & Mineral Resources Division  
Ministry of Power, Energy & Mineral Resources  
153, Pioneer Road  
Segunbagicha, Dhaka-1000  
www.hcuro.gov.bd